

# THE DAILY GRUNCH

SERVING VILLAGE COMMUNITIES IN NORTH BEDFORDSHIRE

*Produced by Grassroots Publications*

*Previously The Rural Grunch*

07725 812963

Email: [dailygrunch@outlook.com](mailto:dailygrunch@outlook.com)

Web: [www.grassrootspublications.co.uk](http://www.grassrootspublications.co.uk)



ISSUE 1094

26th December - 8th January

**HAPPY NEW YEAR**

**THEATRE  
COVERAGE**

**SEE PAGES 45-52**

**SPORTS  
COVERAGE**

**SEE PAGES 55-59**



# Emma Victoria

HYPNOTHERAPY



- Stress and Anxiety

SOLUTION FOCUSED HYPNOTHERAPY

- Depression

CAN HELP YOU MOVE FORWARD

- Fears and Phobias

- Addictions

- Weight Management

BOOK A FREE INITIAL CONSULTATION

- Fertility

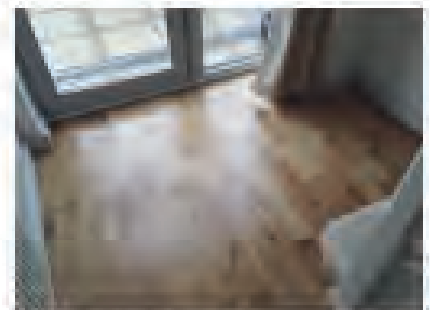
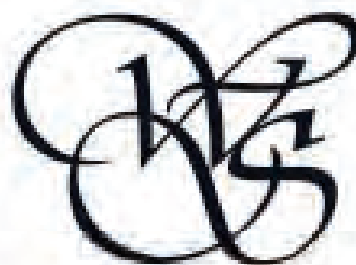
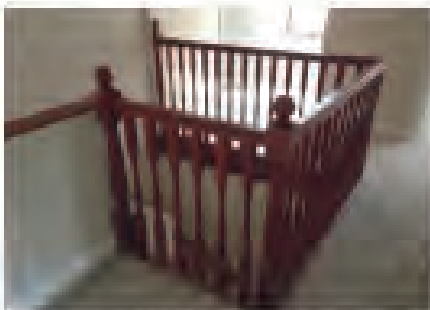
WITH EMMA

- For Children

- And more...

[www.emmavictoriahypnotherapy.co.uk](http://www.emmavictoriahypnotherapy.co.uk)

Near Sharnbrook **07550 098029**



## WSC Carpentry

Friendly – Reliable – Professional

we cover all aspects of carpentry, from skirting  
& hanging doors to brand new kitchens, supplied & fitted.

We will help you in anyway possible to make  
your dreams a reality.

We never leave a job unfinished.

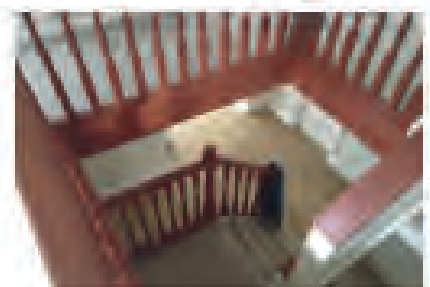
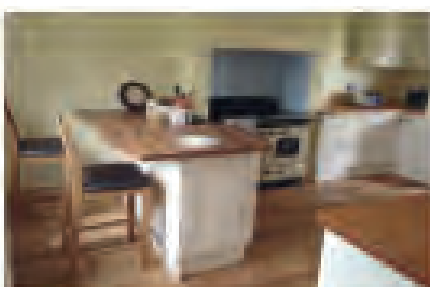
Please feel free to contact us for a free  
no obligation quotation.

Fully insured.

Tel: 07753328001

[wscarpentry@contractor.net](mailto:wscarpentry@contractor.net)

[www.wscarpentry.co.uk](http://www.wscarpentry.co.uk)



# PAGE CHANGES TO THE ONLINE DAILY GRUNCH

To assist our readers we have expanded our Key Changes section.

This allows regular readers to see what has changed at a glance in the editions that they may have missed.

*SEE RATE CARD ON PAGE 5*

**Front Cover Picture:** *Father Christmas is set to please many youngsters on 25th December.*

**Picture:** *Graham White*

## CONDITIONS OF ACCEPTANCE

Although every effort will be made to meet advertisers wishes, the publishers do not accept responsibility for inaccuracies in advertisements or in consequences arising, nor do they guarantee the insertion of any advertisement on a specified date, or in a specified section of the paper. Furthermore, the publishers do not accept any responsibility for one or more of a series of advertisements being omitted for any cause whatsoever. They reserve the right to amend or omit or reclassify or suspend any advertisement previously ordered without giving a reason or prior notice to the advertiser. No responsibility is accepted for the loss or damage to copy, or error in the printing. It is the responsibility of the advertiser to ensure conformity with the Trade Description Act 1968, Sex Discrimination Act 1975 and Business Advertisements (Disclosure Order 1977). All advertisements are accepted in good faith. Placing an order with THE DAILY GRUNCH will signify acceptance of the above conditions.

Artwork forming part or whole of any advertisement prepared by THE DAILY GRUNCH on behalf of any advertiser may not be used in any other publication whatever without permission of the publishers.

## KEY CHANGES TO THE DAILY GRUNCH FROM THE LAST ISSUE

**26th December:** *Page 17, Page 20, Page 50*

**25th December:** *Page 1, Page 9, Page 20*

**24th December:** *Page 53, Page 55*

**23rd December:** *Page 57*

**22nd December:** *Page 31, Page 36*

**21st December:** *Page 19*

**20th December:** *Page 6*

**19th December:** *Page 17, Page 31*

**18th December:** *Page 53*

**17th December:** *Page 15*

**AS ALWAYS WE ENCOURAGE YOU TO SEND US YOUR NEWS AND DETAILS OF ANY EVENTS YOU MAY BE HOLDING.**

*Email us at*

**[dailygrunch@outlook.com](mailto:dailygrunch@outlook.com)**

**Deadline: Approx two working days before publication - for example Friday = 10am Wednesday**



# CONTACT OUR ADVERTISERS

## ACCOUNTANCY/ADMINISTRATION

SJ Tax & Accounting 07899 808592

## BEAUTY

Hazel Kaye 01234 826502  
Body and Soul 07894 807653

## EDUCATION

Kymbrook Pre-School 01234 376190  
Maths Tuition 07456 551899

## ELECTRICIANS

DH Electrical 01234 604121  
John Sinclair Electrical 07815 903467

## ENVIRONMENT

Ace Pest & Hygiene 01234 604211

## ESTATE AGENTS

Carr Estates 01832 778800  
Lane & Holmes 01234 327744

## FENCING AND GROUNDWORK

CG Fencing 07895 679065  
GP Services 07932 002937  
Folly Fencing 07889 272348

## FOOD

TE Brown Butchers (Rushden) 01933 350866  
Zeera Indian Restaurant (Clapham) 01234 364447

## GARDENING

JR Gamblen 07712 778231  
Green Thumb 01234 709345  
Bri Ag 01234 376513  
Tree Specific 07949 368374

## HEALTH

Emma Victoria Hypnotherapy 07550 098029  
Simply Flow [www.simplyflow.co.uk](http://www.simplyflow.co.uk)  
Coreform Pilates 07891 862680  
Medulla Holistic Therapy 07779 088281

Claudia von Caron Physio

01234 781777

## HEATING

BBS (Boiler) 07811 854039

## LEISURE

Shotokan Karate 07900 196600  
AV Air Flight School 07411 326272  
Ace Caravan Services 07780 471682  
Sackville Flying Club 07774 291283  
Sharnbrook Golf Club 07990 622206

## MAINTENANCE

Soulbrook Property Services 07731 818990  
Andrew Blair Carpet Cleaning 07867 499792  
Village Handyman/Building Serv 07951 993093  
John Simmons 07443 224944  
G & L Windows 01234 771100  
WS Carpentry 07753 328001  
Lee Property Developments 07747 445470  
AD House/Garden Maintenance 07542 592305  
Tony Pay Chimney Sweep 07899 016129  
Zack Painter 07513 549843  
Franklin Roofing and Property 07747 785320

## MEMORIALS/METALCRAFT

Wrighton & Barker 01234 352023  
Orchid Farm Metalcraft 07789 496578

## PETS

K9 Kuts 07538 276993  
Penhazy Parlour 07768 194367  
Ababcab 07860 837043

# ADVERTISING RATE CARD ON PAGE 5



# WELCOME TO THE DAILY GRUNCH

The online Daily Grunch celebrated its third anniversary on 12th April after replacing the printed Rural Grunch, which ceased to exist when Prime Minister Boris Johnson announced the first Covid-19 Lockdown on 23rd March 2020.

The Daily Grunch has allowed us to offer greater coverage for our readers especially as we aim to update on a daily basis - now for at least 300 issues per annum.

We are now able to covering a wider area and include most of the villages in the North-East Bedfordshire constituency.

Some people enquire about the old Rural Grunch but unfortunately it would not have been able to continue on a viable basis particularly with the constraints imposed because of Covid-19.

There have been favourable comments for The Daily Grunch especially with the type of coverage we can now offer.

However, we will not be able to ascertain how successful the change will be until next summer.

This is because we will not be at full capacity until then because most of the community events that we would aim to give full coverage have been cancelled for this summer.

Despite this, we are still able to give extensive sport coverage and we are looking to increase our support for the local theatre world.

We are still aiming to continue to support the local business community by offering competitive advertising in the online magazine.

We have adjusted the pricing to suit an online magazine and these prices appear on this page. And during tier and lockdown periods we have not charged so have given complimentary issues to our loyal advertisers.

**We had to suspend production from 27th September to 29th November 2022 due to eye health issues.**

Therefore the 300th issue for 2022-23 was reached on 19th June.

Graham White

## RATE CARD

### ADVERTISING PRICES

**A NEW RATE CARD WILL COME INTO EFFECT FROM EARLY FEBRUARY 2024.**

**FURTHER INFORMATION WILL BE AVAILABLE DURING JANUARY 2024**

**WE WOULD LIKE TO WISH ALL OUR ADVERTISERS AND READERS A MERRY CHRISTMAS AND A HAPPY NEW YEAR**

**AS ALWAYS WE ENCOURAGE YOU TO SEND US YOUR NEWS AND DETAILS OF ANY EVENTS (VIRTUAL) YOU MAY BE HOLDING.**

*Email us at*

**grassrootspublications@btconnect.com  
ruralgrunch@btconnect.com**

**Deadline: Approx two working days before publication - for example Friday = 10am Wednesday**

# Collection Calendar

1

Please ensure that your bins are out for collection by 6am on your collection day. Missed collections must be reported within 48 hours of your scheduled collection. Visit [www.bedford.gov.uk/recycling](http://www.bedford.gov.uk/recycling) to report a missed collection.



**Remember!**

Garden waste collections are suspended from 1<sup>st</sup> December to 1<sup>st</sup> March.

## December 2023 and January 2024 Date Changes

### Recycling only

Mon 25 Dec	moves to	Sat 23 Dec
Tues 26 Dec	moves to	Weds 27 Dec
Weds 27 Dec	moves to	Thurs 28 Dec
Thurs 28 Dec	moves to	Fri 29 Dec
Fri 29 Dec	moves to	Sat 30 Dec

### Rubbish only

Mon 1 Jan	moves to	Tues 2 Jan
Tues 2 Jan	moves to	Weds 3 Jan
Weds 3 Jan	moves to	Thurs 4 Jan
Thurs 4 Jan	moves to	Fri 5 Jan
Fri 5 Jan	moves to	Sat 6 Jan

### Key

**Red Outline =**  
Date Change

**Orange =**  
Recycling Only

**Purple =**  
Recycling and Garden

**Grey =**  
General Rubbish

### December 2023

M	T	W	T	F
				1
4	5	6	7	8
11	12	13	14	15
18	19	20	21	22
25	26	27	28	29

### January 2024

M	T	W	T	F
1	2	3	4	5
8	9	10	11	12
15	16	17	18	19
22	23	24	25	26
29	30	31		

### February 2024

M	T	W	T	F
			1	2
5	6	7	8	9
12	13	14	15	16
19	20	21	22	23
26	27	28	29	

### March 2024

M	T	W	T	F
				1
4	5	6	7	8
11	12	13	14	15
18	19	20	21	22
25	26	27	28	29

### April 2024

M	T	W	T	F
1	2	3	4	5
8	9	10	11	12
15	16	17	18	19
22	23	24	25	26
29	30			

### May 2024

M	T	W	T	F
		1	2	3
6	7	8	9	10
13	14	15	16	17
20	21	22	23	24
27	28	29	30	31

### June 2024

M	T	W	T	F
3	4	5	6	7
10	11	12	13	14
17	18	19	20	21
24	25	26	27	28

### July 2024

M	T	W	T	F
1	2	3	4	5
8	9	10	11	12
15	16	17	18	19
22	23	24	25	26
29	30	31		

### August 2024

M	T	W	T	F
			1	2
5	6	7	8	9
12	13	14	15	16
19	20	21	22	23
26	27	28	29	30

### September 2024

M	T	W	T	F
2	3	4	5	6
9	10	11	12	13
16	17	18	19	20
23	24	25	26	27
30				

### October 2024

M	T	W	T	F
	1	2	3	4
7	8	9	10	11
14	15	16	17	18
21	22	23	24	25
28	29	30	31	

### November 2024

M	T	W	T	F
				1
4	5	6	7	8
11	12	13	14	15
18	19	20	21	22
25	26	27	28	29



# TAKE A SHORT CUT BY SUE

Many people are now reading The Daily Grunch but for some it is a new experience.

For a few, it may be too many clicks or you cannot remember the name of the website.

There is a little trick:

Go to the [www.grassrootspublications.co.uk](http://www.grassrootspublications.co.uk) Home Page where the link to The Daily Grunch is located. In the top right hand corner of this page you will see 'three vertical dots'. Click on these and you will see a list of options.

Choose 'Add to Home Screen' and you should have an icon for Grassroots Publications in the favourites area or something similar on your device. Then any time you want to access The Daily Grunch you only have to click on this icon to take you to the link.

If you want to find a specific article in The Daily Grunch try this



Ctrl + F to find the subject/word you are looking for. This avoids trying to find the elusive article.

**For example:** Open The Daily Grunch – Press **Ctrl + F** which will open a small box, Type in the box the topic/number you are looking for. Say for example - 'Riseley'.

You will find 16 entries in the 27th October.2020 edition.

Sue  
[www.renholdvillage.co.uk](http://www.renholdvillage.co.uk)

## SI TAX & ACCOUNTING SERVICES

### QUALIFIED ACCOUNTANT FCCA ATT

Professional and friendly service  
Sole Traders, Limited Companies  
Partnerships, Business Start-ups  
Bookkeeping, Payroll, CIS  
Subcontractors  
VAT & Tax

[sally@sjtax.co.uk](mailto:sally@sjtax.co.uk)  
01234 831997  
07899 808592

## John Sinclair Electrical

ELECSA  
Part P

### Domestic & Commercial

- \* Household Electrics
- \* Lights & Sockets
- \* Showers & Cookers
- \* Rewires & Additions
- \* Fuse Boxes
- \* Security Lighting
- \* Competitive Prices
- \* 25 Years Experience
- \* Alarm Systems & CCTV

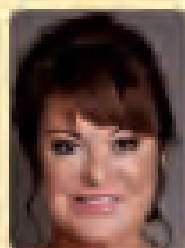
Part 'P' Registered  
Call John for A Free Estimate  
Tel: 01234 866838  
Mobile 07815 903467



Voted N° 1 Salon in the UK

# Hazel Kaye Hair, Beauty & Facial Aesthetics

Order Products/Book Appointments Online  
[www.hazelkaye.com](http://www.hazelkaye.com)



"We look forward to seeing you soon!" Hazel, Proprietor

Stockists of premium hair, beauty & fragrance brands and gift vouchers



40 High Street, Oakley, Bedfordshire, MK43 7RG  
Tel: 01234 826502, e: [hazel@hazelkaye.com](mailto:hazel@hazelkaye.com)



# GRUNCH OPINION

**For many Bedfordians, the announcement that Universal Studios have bought land near Stewartby for a possible theme park was the perfect Christmas present.**

However, this may not be the case for those living on the proposed East-West Rail route between Bedford and Cambridge.

In recent months, North East Bedfordshire MP Richard Fuller has questioned the viability of the project and the National Audit Office effectively agreed with his concerns especially the lack of a business plan.

This will have given those living on the preferred Route E, including residents in Clapham, Ravensden, Wilden, Colesden and Roxton, hope that the Government would scrap the last section of the new railway line.

However, the news that a theme park could be built on the old London Brickworks site will give a new impetus to the struggling East-West Rail Company.

All of a sudden, the chiefs of East-West Rail

will be able to claim a business plan, centered around the possibility of a theme park.

The East-West Railway will have a station on the Bedford to Bletchley section of the route between Cambridge to Oxford, likely to be at either Kempston Hardwick or Stewartby.

A further station could be built on the Midland mainline between London St Pancras and the North - maybe at Wixams.

What this means is that those living in the East and West of England would be able to travel to the possible theme park without having to go into London.

Furthermore, there could be a direct route to such a park from the North especially for those living in Nottingham and Sheffield while changes to the railway line at Milton Keynes could also mean a direct route from Manchester, Liverpool and Birmingham.

So, there may be more sleepless nights for those living in the North Bedfordshire villages,

**Graham White**

DAVID JAMES  
WWW.DAVIDJAMESKITCHENS.CO.UK



We are a local manufacturer of beautiful kitchens. We sell direct to save you money. The factory showroom has an extensive display of different styles.



**SAVINGS ON ALL KITCHENS  
& Up To 25% Off Top Brand  
Appliances**

**PULLOXHILL BEDS MK45 5EU  
01525 722230**





# KIMBOLTON CHRISTMAS FAYRE



The Kimbolton Christmas Fayre was another fantastic occasion with a regular flow of visitors on Sunday 3rd December.

Held in the state rooms at Kimbolton Castle, there were many high-quality stalls providing a great choice for Christmas gifts.

The event was organised by the Kimbolton School Parents Association and included festive music by pupils.



# KIMBOLTON CHRISTMAS MARKET



● Hay Chocolate was at the Kimbolton Street Market on Sunday 3rd December selling many of their festive offerings including Festive Bonbons, Hay Chocolate Bars and a Chocolate Truffle Selection. All are handmade in a small kitchen on a farm in Southoe, St Neots. See [www.haychocolate.com](http://www.haychocolate.com) or email [info@haychocolate.com](mailto:info@haychocolate.com)



*The Kimbolton Street Fair proved to be popular despite the inclement weather on Sunday 3rd December.*

*Many stalls lined the main street in the build-up to the switching-on of the Christmas lights.*

*In the foreground of the picture on the left is popular Upper Dean entrepreneur known locally as 'Mr Pickles' who said he did a roaring trade.*

*Regency Funeral Directors provided carriage rides.*



# BLETSOE PUDDINGS NIGHT



The Bletsoe Puddings Night on 25th November was another outstanding success with over 50 people attending.

After a starter of home-made soup, guests had a chance to sample the wide range of desserts. It is rumoured someone had three in one bowl. Now who was that?

The event was organised to raise funds for St Mary's Church.

*Pictures: Renhold Village Facebook*

**Coverage on Pages 12-13**



# BLETSOE PUDDINGS NIGHT



A highlight of the Bletsoe Puddings Night, organised by The Friends of St Mary's Church, may have been the desserts but the Special Quiz came a close second.

The Puddings Night is one of several events being organised in the run-up to Christmas.

The day after was the Bletsoe Winter Concert, on 26th November.

On Saturday 2nd December, there is the St Mary's Church Christmas Breakfast Morning between 10am and midday. The Christingle Carol Service is on Sunday 17th December at 4pm.

*Pictures: Renhold Village Facebook*

**Coverage on Pages 12-13**





BRITISH  
PROPERTY  
AWARDS

2021



GOLD WINNER

ESTATE AGENT  
IN BEDFORD

Have you seen... We **won!**  
For a winning service, **talk to us.**

01234 327744 | [sales@laneandholmes.co.uk](mailto:sales@laneandholmes.co.uk) | [laneandholmes.co.uk](https://laneandholmes.co.uk)

# GRUNCH NEWS



● Pupils at Renhold Primary School have been praised for their good behaviour during the Renhold Church, Chapel and School Carol Service. The event, which was held at the Village Hall, was interrupted by a fire alarm. The Service had to be concluded in the car park. The youngsters ensured that the 'Show' had to go on no matter what.

*Picture: Renhold Village Facebook*



**93A High Street, Rushden  
NN10 0NZ**

**01933 350866**

**[app.timbrownsbutchers.com](http://app.timbrownsbutchers.com)**

**[enquiries@tebrownbutchers.co.uk](mailto:enquiries@tebrownbutchers.co.uk)**

**Beef, Lamb, Pork, Chickens, Sausages, Bacon  
and so much more**







## Andrew Blair

Professional Carpet and Upholstery Cleaning

Phone or Whatsapp 07867499792

e-mail arblair64@yahoo.co.uk

website

<https://andrewblairprofessionalcarpetandupholsterycleaning.com>

**PLEASE SUPPORT OUR ADVERTISERS**



### ABACAB DOG GROOMING

New dog grooming service in Odell. We offer a personal service aimed to meet the needs of you and your dog, catering for all breeds large or small. Our services include:-

- Clipping/trimming
- Hand stripping (Terriers and Spaniels)
- Nail trims

TELEPHONE:- 01234 720825 OR 07860 837043



### Franklin Roofing and Property Services Ltd

For all building maintenance issues

Please call Jonathan on 077 477 85320

Or 01234 709674

For a free no obligation quotation

From full house refurbishments to extensions to

kitchen fitting and decoration

Full roof replacements to small repairs

High access specialists

<https://en-gb.facebook.com/franklinroofingandproperty/>

[www.franklinroofingandproperty.co.uk](http://www.franklinroofingandproperty.co.uk)

Company based in Riseley, Bedfordshire.

**PLEASE SUPPORT OUR ADVERTISERS**



# FOR YOUR DIARY

**Saturday 30th December:** North Beds Ramblers Walk - Hail Weston at 1pm. Meet at corner of High Street and Ford End. 6.5 miles. Circular walk including Grafham Water and Southoe. For further details go to [www.ramblers.org.uk/north-bedfordshire](http://www.ramblers.org.uk/north-bedfordshire)

**Saturday 6th January:** North Beds Ramblers Walk - Milton Keynes Willen Pavilion at 1pm. Park and meet at Willen Pavilion MK15 9HU. 7.5 miles. Walk along the Grand Union Canal and River Ouzel. For further details go to [www.ramblers.org.uk/north-bedfordshire](http://www.ramblers.org.uk/north-bedfordshire)

**Tuesday 16th January:** Addison Centre, Kempston, Bedford. 2.15pm. Bedford National Trust Meeting. The speaker is Chris Hilliard of the Bedford and Milton Keynes Werways Trust on 'The John Bunyan Community Boat'. Everyone welcome. No need to book. Plenty of parking available. Refreshments available before the meeting. There will be a small entry cost. For further information contact Betty Thomas on 01480 860421.

**Saturday 20th January:** Great Staughton at 11.30am-2.30pm. Great Staughton Indoor Food and Craft Market. Refreshments will be available including tea, coffee and hot chocolate. For further information email: [greatstaughtonindoormarket@gmail.com](mailto:greatstaughtonindoormarket@gmail.com)

**Saturday 18th May:** Pertenhall from 9am. North Bedfordshire Young Farmers Rally. Judging of livestock, food, crafts etc. Stalls and entertainment for all the family throughout the day

**Every Sunday:** Great Barford Village Hall at 10am. Great Barford Run Together. Running for fun for all standards including novices.

**Every Thursday:** Riseley Village Hall 3.30-5pm. Riseley Bus Stop Cafe for School Years 7-13

**First Friday of the Month:** Keysoe Village Hall at 7.30pm. Bar Night

**Every Saturday:** There may be football matches at Oakley, Riseley, Sharnbrook and Thurleigh

## FOR YOUR DIARY

£1 per insertion per 30 days for a max 30 word insertion, cheque payable to Grassroots Publications, may be sent to Grassroots Publications, 2, Strawberry Hill Cottages, Knotting Green, Bedford, MK44 1AB Use this section to advertise any community or social event that may be coming up in the forthcoming months. It can include sports events. We reserve the right to omit any dates if payment is not made. If in doubt feel free to contact us on 01234 781374 or email: [dailygrunch@outlook.com](mailto:dailygrunch@outlook.com). Price includes VAT



● Stalls at Sharnbrook Christmas Fayre on 1st December. Also see Pages 32-33



# Penhazy Parlour



Qualified dog groomers

New clients receive 10% off first treatment

Based in Little Staughton

We welcome any breed of dog big or small from nervous to happy

All treatments are one to one basis

Set in a stress free environment

We can deal with any needs that your dog may require

We offer:

Clipping

Nail clipping

Hand stripping

Spa days

And much more

Ring Katie on 07774519694 or Sally on 07768194367

# Penhazy Parlour



**PLEASE SUPPORT OUR  
LOYAL ADVERTISERS**



# GRUNCH NEWS



The Wilden Post Box again has a festive feel.

Every year, it is decorated by a mystery resident.



The Stables Christian Centre at Bolnhurst held its annual Christmas Sale on Saturday 2nd December.

Plenty of potential Christmas goodies were available for sale including festive cards and the Stables' popular preserves.

The Saturday Coffee Shop sessions will resume in May 2024.



**\*for a professional and reliable\***  
**Painting & Decorating Service**

(20 years experience in North Bedfordshire)

- Full written estimation given on request
- All jobs considered
- Interior and external decorating
- wallpapering
- Old and new property maintenance

Contact: Zack Wlodarczyk

Melchbourne, Bedfordshire  
01234 708983 or 07513 549843

**LEE PROPERTY DEVELOPMENTS**

• EXTENSIONS	• PATIO & FENCING
• BATHROOMS	• DECORATION
• KITCHENS	• ROOFING

FOR A FREE ESTIMATE CONTACT  
LEE CONSTABLE  
MOBILE 07747 445470  
OFFICE 01933 359780  
leec.developments@hotmail.co.uk



# BRIDGET'S COCKTAIL COLUMN



## NEGRONI SBAGLIATO

*This is Olly Smith's take on the classic Italian cocktail.*

### **Ingredients and Method**

*Pour 25ml Campari and 25ml Sweet Vermouth into a glass, add ice and top up with Prosecco. Stir gently and garnish with a chunky slice of orange.*



**HAPPY NEW YEAR**

Thanks to Olly Smith

## AV AIR FLIGHT SCHOOL

Modern Aircraft

Try a short flight

If local see your house and be surprised how easy it is to fly

Fully qualified instructor - Adrian

**Contact: [avairflightschool@gmail.com](mailto:avairflightschool@gmail.com)**

**Mobile: 07411 326272**



# SARTORI WELLNESS

## Therapeutic Massage

Feeling tired, stressed, stiff aching muscles, do you work on your feet all day?  
Come unwind and relax with a therapeutic massage.  
Choose from a Thai Foot Massage, Indian Head Massage or Tension Relief Massage.  
Fully qualified and insured. Ladies Only. Based Rushden Northamptonshire

**Contact Mary To Book**

**Tel: 07464 100195**

**Email: [sartoriwellness@gmail.com](mailto:sartoriwellness@gmail.com)**

**[www.facebook.com/sartoriwellness](https://www.facebook.com/sartoriwellness)**



**SARTORI  
WELLNESS**

**PLEASE SUPPORT OUR ADVERTISERS**



# CARLTON COFFEE MORNING



The Carlton Coffee Morning on 5th December had a festive feel with a number of seasonal toys on show along with a collection of books for attendees to browse.

Another highlight was the excellent selection of cakes to go with the tea or coffee.

Other recent events at Carlton Village Hall have included a Christmas Fayre.



# GRUNCH NEWS



● The Souldrop Christmas Fayre took place on the afternoon of Sunday 3rd December with plenty of potential festive gifts on sale. Father Christmas also made an appearance,  
*Picture: Souldrop Community Facebook.*



R.J.F. Plumbing, Heating  
& Mechanical Services Ltd

**Roger Flanagan**  
*Director*

38 Hookhams Lane  
Renhold  
Bedford MK41 0JT  
Office: 01234 771396  
Mobile: 07717 756677  
Email: [info@rjf-plumbing.co.uk](mailto:info@rjf-plumbing.co.uk)



## PLEASE SUPPORT OUR ADVERTISERS



# CARLTON CHRISTMAS FAYRE



**There was festive spirit galore at the Carlton Christmas Fayre and even Father Christmas got into the mood with his own special dance.**

**A particular highlight of the day on 18th November was the musical entertainment provided by Carlton Primary School.**



**Coverage on Pages 24-25**

# CARLTON CHRISTMAS FAYRE



The Christmas Fayre has been the highlight of the autumn events at Carlton Village Hall.

There has also been an excellent Coffee Morning on 7th November, which proved to be very popular.

The next Coffee Morning will be on Tuesday 5th December between 10.30am and noon where there may be a festive theme and possibly the odd mince pie.

Coverage on Pages 24-25



# RAVENS DEN WI CHRISTMAS FAYRE

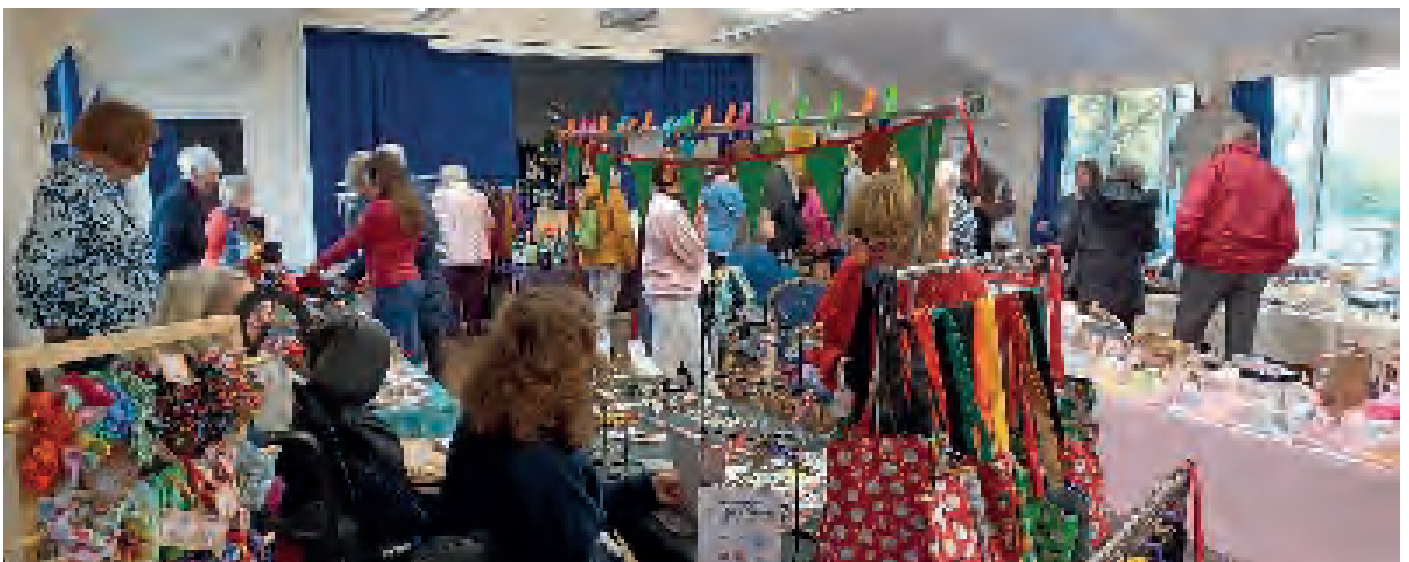


Ravensden Women's Institute held a successful Christmas Fayre on 18th November with some excellent stalls and were rewarded with a fine turnout.

Coverage on Pages 26-27

*Pictures: Renhold Village Facebook*

# RAVENS DEN WI CHRISTMAS FAYRE



Coverage on Pages 26-27

*Pictures: Renhold Village Facebook*



# SHARNBROOK CHRISTMAS TREE FESTIVAL



COVERAGE ON PAGES 28-29



The Sharnbrook Christmas Tree Festival at St Peter's Church, on 1st and 2nd December, proved to be another popular event.

Many of the local organisations decorated a tree. These included many of the youngsters groups such as the Scouts and Rainbows while two classes at Sharnbrook Primary School - Penguins and Robins - also took part.

There was a particularly good exhibit by the Ouse Valley Singers - pictured at the top of this page.



# SHARNBROOK CHRISTMAS TREE FESTIVAL



COVERAGE ON PAGES 28-29





professional dog grooming

**Fully Qualified and Insured Dog  
Groomer. I work one on one with your  
dog, with a range of services.**

**63 High Street, Wilden,  
Bedfordshire, MK44 2QD**

**07538276993/  
k9kutsgroomers@outlook.com**

**Facebook- k9kutsgroomers**

# GRUNCH NEWS

**The National Audit Office (NAO), which is the taxpayers' watchdog, has completed its investigation into the East West Rail (EWR) project and recently published their report.**

North East Bedfordshire MP Richard Fuller commented: "Their report has two main conclusions. Firstly, there are major problems with government having two different, competitive and uncoordinated approaches to growth in the region. Secondly, the business case is very weak and lacks clarity on the so called 'strategic' benefits.

"The NAO report is further evidence that East West Rail is in serious trouble and all taxpayers should be cautious about this potentially scandalous waste of money."

❑ Rare Pantomimes are staging their version of Cinderella at the Corn Exchange in Bedford from Thursday 21st December to Sunday 31st December. For further information see [www.bedfordcornexchange.co.uk](http://www.bedfordcornexchange.co.uk) or phone the Box Office on 01234 718044.



● The Bletsoe Christmas Breakfast took place on Saturday 2nd December. A steady flow of visitors enjoyed bacon butties, mince pies and other refreshments. Several stalls were also available for browsing.



Telephone 01234 709163  
or 07899 016129

Qualified

Chimney Sweep



Riseley based professional Chimney Sweep.



Fully qualified member of The Guild of Master Sweepers.



Police CRB checked and £2 million liability insurance.



Service reports that are recognised by all insurance companies.



Specialist equipment used for Woodburning Stoves & Lined Chimneys.

Recommended by local Stove / Fireplace installers.

CCTV inspections and reports.

Contact Tony, your local Chimney Sweep.

[www.black-horse-chimney-sweep.co.uk](http://www.black-horse-chimney-sweep.co.uk)

e-mail [tnav59@btinternet.com](mailto:tnav59@btinternet.com)



# SHARNBROOK CHRISTMAS FAYRE



It was a new look for the Sharnbrook Christmas Fayre after organisers had managed to close part of the High Street for the event.

The crafts marquee was switched to the Primary School while the fun fair took over the spot opposite the Old Post Office.

The crowd swelled for the traditional switch-on of the Christmas lights.

Plenty of entertainment was laid on including a singer and morris dancers.

COVERAGE ON PAGES 32-33



# SHARNBROOK CHRISTMAS FAYRE



COVERAGE ON PAGES 32-33





# GRUNCH RECIPES

## OUR FAVOURITES

### Pilaf with Buttermilk Chicken and Pomegranate

Rick Stein - Saturday Morning Kitchen

2 large boneless chicken breasts skin on  
**100g** buttermilk  
1 garlic clove crushed  
**Large** pinch saffron strands  
**2tbsp** olive oil  
1 onion sliced  
**300g** basmati rice  
**450ml** chicken stock  
**1tbsp** za'atar  
**Handful** fresh parsley chopped  
**2tbsp** pine nuts  
1 pomegranate, seeds only  
Salt and freshly ground black pepper.

#### Method

☐ About 2-4 hours before cooking, put the chicken breasts in a bowl with the buttermilk and garlic. Cover and leave in the fridge to marinate.

☐ About 30 minutes before cooking, put the

saffron in a bowl, pour over 2-3 tablespoons of hot water and leave it to bloom.

☐ In a saucepan with a lid, add the olive oil and fry the onion until soft. Add the rice and stir it into the oil. Add the saffron water and stock then season with ½ teaspoon of salt and some black pepper. Put a lid on the pan, turn down the heat and simmer the rice for 10-12 minutes until the liquid has been absorbed.

☐ Preheat the oven to 220°C. Remove the chicken from the marinade, put it in a baking dish and sprinkle with the salt and za'atar. Cook the chicken for 20-25 minutes or until cooked through.

☐ To serve, stir the parsley and pine nuts into the rice. Slice the chicken and place it on top of the rice with the pomegranate seeds.

## GP SERVICES

### GROUNDWORK AND DIGGER HIRE



**PETER HAYES**  
**PROPRIETOR**

- ☐ Mini Digger and Driver Hire
- ☐ Various Size machines
- ☐ Breaker/Auger Attachments
- ☐ Dumper Hire
- ☐ Foundations/Concreting/Drainage
- ☐ Site Clearance
- ☐ Tree and Root Removal
- ☐ Sewage Treatment Plants Installed
- ☐ Leach Fields Installed
- ☐ Road Construction/Drives
- ☐ Patios/Hard Landscaping
- ☐ Menage/Horse Arena Construction
- ☐ Muck Heap Removal
- ☐ Fencing

**01234 782940**  
**07932 002937**

[enquiries@gpservicesonline.com](mailto:enquiries@gpservicesonline.com)  
[www.gpservicesonline.com](http://www.gpservicesonline.com)

**FULLY INSURED**

# GRUNCH TEASER

Previous Teaser Answer  
Riseley

IN WHICH VILLAGE  
WOULD YOU FIND  
THIS SCENE?

Answer in January



## SACKVILLE FLYING CLUB

### HOT AIR BALLOONING GROUP

Lots of fun, little cost, great for all the family

Find out more by calling

**Tim Wilkinson on 07774 291283**

**sackville@avnet.co.uk**



# GRUNCH NEWS

**Great Staughton food and craft market will run on the third Saturday of every month from 11.30am to 2.30pm at Great Staughton Village Hall, The Green, Great Staughton, from 20th January.**

We are looking to bring best local food, home products and gifts to the village. We will be providing a welcoming community experience, reducing food miles and encouraging people to shop local.

We will have tea, coffee, hot chocolate and cold drinks available to purchase throughout the market. We are aiming to provide a meeting-point for all villagers to shop and have a chat over a drink and maybe a piece of cake or something savoury for lunch.

We have a variety of stalls selling cakes, cinnamon buns, cheesecakes, savouries, focaccia, dog treats, ale, gin, confectionery, pickles, chutneys, honey, card-making kit, leather goods, felt animals, wax melts, 3D



● **Great Staughton Village Hall will be the venue for an indoor market on the third Saturday of the month from 20th January.**

printing art, resin items, stained glass item and ceramics.

**Great Staughton Indoor Market**

## WRIGHTON & BARKER

**Independent Monumental Masons**

**Family business**

**Established over 100 years**

**Large selection of memorials on display**

**Home visits by appointment**

**Cleaning and restoration work carried out**

**Call for free brochure**

**01234 352023**

**or visit our showroom at**

**24a Foster Hill Road, Bedford**

**MK40 2EN**

**[www.wrightonandbarker.co.uk](http://www.wrightonandbarker.co.uk)**

**email - [office@wrightonandbarker.co.uk](mailto:office@wrightonandbarker.co.uk)**





# MILTON ERNEST GARDEN CENTRE CHRISTMAS FAYRE



The Milton Ernest Garden Centre Christmas Fayre took place on 18th November with a variety of festive stalls along with one specialising in hot spices.



# MELCHBOURNE CHRISTMAS FAYRE



● The Melchbourne Christmas Fayre took place at St Mary Magdalene Church on 25th November.

*Pictures: Renhold Village Facebook*



# BEDFORD ARMS, OAKLEY CHRISTMAS FAYRE



● The Bedford Arms, Oakley Christmas Fayre took place on Saturday 25th November.

*Pictures: Renhold Village Facebook*



# RENHOLD CHRISTMAS TREE FESTIVAL



The Renhold Christmas Tree Festival took place at All Saints Church during the weekend of 9th and 10th December. Many local organisations decorated a tree.

*Picture: Renhold Village Facebook*



# SAXBY CIDER CHRISTMAS FAYRE AT FARNDISH



Saxby Cider held an artisan Christmas Fayre on the farm at Farndish where their cider is produced.

The Fayre on 9th December featured many local independent businesses including the full range of Saxby ciders, which are usually available at their shop on the Chester House Estate, Claudius Way, Wellingborough, NN8 2DH, Tuesday-Sunday 10am-4pm.



# THE CANINE PARTNERS CHRISTMAS FAYRE



The Canine Partners Christmas Fayre at Milton Ernest Garden Centre proved to be a great success on 11th November with plenty of dogs in attendance.

The popular canines also had the chance to visit Santa Paws while the Roxtonettes Choir provided the musical entertainment.

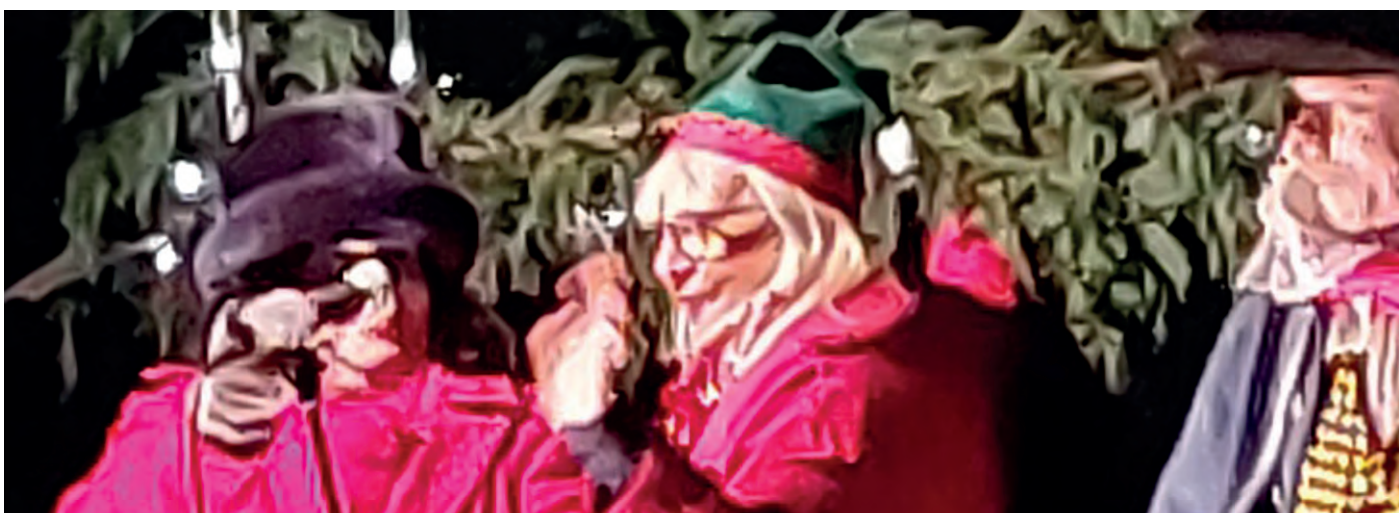
There were also plenty of festive stalls and a 'human' fruit machine.



# RISELEY FATHER CHRISTMAS TOUR



● The annual Riseley Father Christmas Tour took place on Saturday 9th December during the early evening. It started at Rotten Row and proceeded to Gold Street, Church Road, Nicholls Close, High Street to Maple Gardens then on to College Drive and The Orchard. Youngsters had the chance to post their gift list to Santa, who was accompanied by his 'Elves'.





# BLETSOE END OF YEAR CONCERT



● An excellent turnout witnessed another fine concert at Bletsoe Village Hall by the Sounds Fine Group on Sunday 26th November. This was their End of Year Concert having performed throughout the year including at Odell on August Bank Holiday Monday.

*Picture: Dave and June Jones*

## NEW YEAR'S RESOLUTION

### Why not try a walk with North Beds Ramblers?

We are a friendly group who walk on Saturdays:  
**Every Saturday afternoon, approx. 6 miles**

**Saturday mornings, twice monthly, 10 -12 miles**

*Just turn up wearing suitable footwear and clothing  
Sorry only assistance dogs allowed*



**We walk in all weathers,  
you may get wet and muddy!!**

**Bring refreshments  
(and plenty of water in the  
summer)**



#### Interested?

Find our programme on the Ramblers website <https://www.ramblers.org.uk/north-bedfordshire>  
Facebook <https://www.facebook.com/groups/northbedsramblers>  
Twitter [@nb\\_ramblers](https://twitter.com/nb_ramblers)

***Walks are free but if you decide to walk with us regularly we would like you to join the Ramblers***

The Ramblers' association is a registered charity (1093577) and a company limited by guarantee, (No.445892). Registered Office: 1 Clink Street, 3rd Floor, London. SE1 9DG



# RISELEY COMMUNITY THEATRE

## *'RUN FOR YOUR WIFE'*

Wednesday 22nd November -Saturday 25th November  
at Riseley Village Hall



The Riseley Community Theatre have produced some outstanding performances over the years and their latest offering 'Run for Your Wife' by Ray Cooney was another excellent production.

Farces can be difficult to play out, the timing has to be spot on otherwise the intended humour will fall flat on the audience.

It was a captivating performance and reached high levels with some outstanding acting by Jon Davis as Stanley, a lodger who lived in the flat upstairs.

Stanley did his best to protect taxi driver John, played by Ben Richardson, and in the process produced the required farcical performance, including an excellent interpretation of a country accent.

Although potentially a difficult script to perform, the cast played out perfectly events surrounding the naughty lifestyle of taxi driver John, who tried to have a secret life that evolved around having two wives. It all went pear-shaped when John was mugged while working and subsequently all hell broke loose as he tried to hide his wrong-doings.

Amusing scenes involving the police officers, Troughton (Mark Worth) and Waterhouse (Graham Cole) followed, centering on his addresses in Wimbledon and Streatham.

Obviously, the two wives did not know about the other address and things got even more complicated when, trying to protect his naughtiness, John appeared to be in a relationship with Stanley.

Then as everything unravelled, the audience had the delight of seeing Mary (Nicola Hickson) in her lingerie.



Coverage on Pages 45-47

Graham White



# RISELEY COMMUNITY THEATRE

## 'RUN FOR YOUR WIFE'

Wednesday 22nd November - Saturday 25th November  
at Riseley Village Hall



### THE CAST

**John:** Ben Richardson

**Mary:** Nicola Hickson

**Barbara:** Claire Dudeney

**Stanley:** Jon Davis

**Troughton:** Mark Worth

**Porterhouse:** Graham Cole

**Bobby:** Peter Swallow

**Photographer:** Jane Davis

Coverage on Pages 45-47



# RISELEY COMMUNITY THEATRE

## *'RUN FOR YOUR WIFE'*

Wednesday 22nd November -Saturday 25th November  
at Riseley Village Hall



Coverage on Pages 45-47



# GRUNCH THEATRE



● The cast of Little Women had the chance to have their picture taken with comedian Omid Djalili after he had watched a performance of the play at Sharnbrook Mill Theatre. The performances took place at the end of November and beginning of December.

*Picture: Sharnbrook Mill Theatre Facebook*



**LEE PROPERTY DEVELOPMENTS**

- EXTENSIONS
- BATHROOMS
- KITCHENS

- PATIO & FENCING
- DECORATION
- ROOFING




FOR A FREE ESTIMATE CONTACT  
 LEE CONSTABLE  
 MOBILE 07747 445470  
 OFFICE 01933 359780  
 leec.developments@hotmail.co.uk

## TAKE CHARGE OF YOUR HEALTH!

*simply*  
**FLOW**

Simply Flow offer a wide range of health and fitness programs, with something to suit everybody.

From Mindful Movement to Fitness over 40, we can help improve your mobility, strength and well-being.

From Stress Management to Self Defence, we can tailor training to your specific needs.

Weekly Tai Chi classes,  
 personal and small group sessions,  
 workshops and in-house training.

Professional Instructor, 35 years experience.

**[www.simplyflow.co.uk](http://www.simplyflow.co.uk)**



# GRUNCH THEATRE



● Chloe Price, left, and Lissie Allsopp provided musical entertainment during the 2023 Bedford Fringe Festival. The dates for 2024 have been announced - 18th-28th July.

## CORE.FORM

**Monday - 9.15am -10.15am:** Keysoe Village Hall  
**Monday - 4pm - 5pm:** Dalton Community Hall, Upper Dean  
**Wednesday - 11.15am -12.15pm:** Keysoe Village Hall

*To book a class, or for more information,  
please get in touch with*

**Keziah at CORE.FORM Pilates**

**Tel:** 07891862680

**Email:** [coreformpilates@outlook.com](mailto:coreformpilates@outlook.com)

## PLEASE SUPPORT OUR ADVERTISERS



# GRUNCH THEATRE

*Autism & Sea*  
*Spectrum*  
*The Place, Bedford*  
*10th February*  
*12pm and 3pm*  
*Tickets: £12 Concessions: £8*

Join us on an adventure with Finn, Ollie & Astrid as we explore the world of autism. This show is an introduction to our characters and how certain traits affect their everyday lives. It's their first day of school and something unexpected awaits them on their new school venture.

In this immersive show experience, no one character is the same and each experiences autism very differently just like us. *Autism & Sea LIVE* is based on a series of books written and illustrated by Amy Le Dain.



**FOR FURTHER DETAILS CONTACT THE PLACE BEDFORD**  
**[www.theplacebedford.org.uk](http://www.theplacebedford.org.uk) or phone 01234 354321**

# GRUNCH THEATRE

*Slow Leaves: Live Music Night*  
*Produced by BPT*  
*Music*  
*The Place Theatre, Bedford*  
*24th January at 8pm*  
*Tickets: £15*

**Slow Leaves is the self-contained solo project of Grant Davidson.**

He curates almost every aspect of the music and its presentation, including being multi-instrumentalist, producer, cover art designer, photographer, and videographer. He views the totality of these aspects as essential parts of a larger project of self-understanding.

His folk and psych-rock stylings recall older songwriters like Mickey Newbury and Nick Drake as well as more modern artists like Andy Shauf and Bill Callahan. His voice has been compared to Roy Orbison and Bryan Ferry. His newest album, *Meantime*, is now out on Birthday Cake Records.



**FOR FURTHER DETAILS CONTACT THE PLACE BEDFORD**  
**[www.theplacebedford.org.uk](http://www.theplacebedford.org.uk) or phone 01234 354321**



# GRUNCH THEATRE

Lamphouse Theatre Presents

TREASURE ISLAND

Dramas in Pyjamas

The Place Theatre

Thursday 28th December

1pm and 6pm

Tickets: £13 Concessions: £8.50

Jim lives in the Admiral Benbow Inn with Grandma, but she's desperate for a real adventure. One night, Billy Bones comes to stay, leading a gang of very silly pirates, with a big secret, to Jim's door. Before she knows it Jim is sailing to Treasure Island, befriending one legged cooks, dodging mutinies and searching for buried treasure.

This is Treasure Island as you've never seen it before, in celebration of Lamphouse Theatre's 10th anniversary. With a slew of silly-singalong-sea-shanties, plenty of preposterous pirates, and dozens of doubloons, you won't want to miss Treasure Island this Christmas.

Suitable for ages 6-106



## Holistic Therapist in Thurleigh

Reiki, reflexology, meditation, well-being



A few moments of calm or a journey of discovery

www.medulla.space - 07779 088281

anne@medulla.space

medulla  
holistic therapies

## JR Gamblen Mower Servicing & Repairs

Experienced workshop staff  
specialising in:

Ride on mowers  
Pedestrian mowers  
Compact Tractors  
Cylinder mowers  
Gang mowers  
Strimmers  
Chainsaws  
Hedge trimmers  
Cylinder & blade grinding

Free collection and delivery  
Call 01234 708170/ 07712 778231



# GRUNCH THEATRE

JACKASTORY  
Bedford Place Theatre Team  
The Place Theatre, Bedford  
10/1, 24/1, 7/2, 21/2, 6/3, 20/3, 3/4, 17/4  
9.30am  
Free

Our Jackastory session run fortnightly, and every week during school holidays.

Listen to members of The Place team read their chosen children's stories and discover some new favourites of your own. Each session runs for 45 minutes to an hour, with a break for refreshments.

This will be a very relaxed event with young, and old, being invited to join the readers in an intimate and friendly atmosphere, on a mound of comfortable cushions!

(Aimed at 0-6-year-olds, but all ages welcome)



**FOR FURTHER DETAILS CONTACT THE PLACE BEDFORD**  
**[www.theplacebedford.org.uk](http://www.theplacebedford.org.uk) or phone 01234 354321**



**GreenThumb**  
LAWN TREATMENT SERVICE

If you've been thinking about enjoying a great lawn this year – green, lush and weed-free, why not contact us today and let us bring your lawn to life.

We provide four seasonal treatments, as well as beneficial treatments to keep your lawn in tip-top condition - prices start from just £5\* per month.

PRICES FROM  
**£5\***  
PER MONTH

Ask us about our annual plans, which allows you to both spread the cost and save up to 25%.

Simply call: 01234 709345 or  
visit: [greenthumb.co.uk](http://greenthumb.co.uk)

\*Based on a lawn size of 40m<sup>2</sup>



# GRUNCH NEWS

## *TASTES LIKE HOME*

**Embarking on a flavour-packed adventure in Bedford, Tastes Like Home is a culinary journey spanning winter and spring 2023-24.**

Generously flavoured with funding by The National Lottery Heritage Fund, with thanks to the awesome National Lottery players, and heaped with a generous portion of funding from local partners of Historic England's High Street.

### **Heritage Action Zone for Bedford**

#### **Meet the Chefs**

**Radhika Aggarwal**, our London-based creative producer, is a true artist in the kitchen of creativity- she's into theatre-making, sound artistry, music, and activism. Stirring things up with her devised, ensemble-led work, she founded Echo Chamber Audio, a hub for aural storytelling and sound.

**Alex Levene**, our Bedford-based sous-chef, who's been orchestrating activities at The Place, Bedford from 2017-2023 and is now leading WordSetFree, where performance meets spoken word, games, civic engagement, and publishing.

#### **Project Tasting Notes**

**Tastes Like Home** is on a mission to uncover and share the delicious memories of food and drink ingrained in the taste buds of Bedford and its residents.

**Picture this:** we're hunting for stories spiced up with flavours from old restaurants, markets, stores, and corner shops.

And guess what? We're cooking up a storm with local independent establishments to engage all sorts of taste buds and unravel memories tied to the universal feast that binds us together - nourishment.

We invite you to become co-creators in this heritage arts project, utilising storytelling, shared



food, and music to delve into the concepts of 'home,' 'place,' and 'heritage,' exploring their personal significance.

We believe that food and drink are the secret ingredient for stirring the mixing pot of cultural heritage, fermenting social identity, and a brewing sense of belonging.

Often overlooked in the historical narrative, the transient nature of shops, markets, and restaurants has concealed significant portions of Bedford's story, particularly the contributions of working-class communities who have chosen to make their homes here in Bedford over the years.

#### **What's On The Menu?**

During 2024, participants and the local public will contribute to creating a map of sites of 'intangible heritage,' weaving together stories into an evolving web of cultural significance. These vital cultural landmarks will form a digital map available online.

We will be hosting a project launch event during February Half-Term at The Place Bedford.

This will feature some of the recorded stories, as well as live performances & activities. Stay tuned for the delicious details in January 2024.

**Lissy Malt**  
**The Place Theatre**





# Treespecific<sup>Ltd</sup>

tree management

**A comprehensive range of tree services from a local dedicated tree surgeon with twenty years experience within the tree industry**

- ✦ All aspects of Tree Maintenance and Tree Care
- ✦ Tree Felling
- ✦ Crown Reduction/Thinning
- ✦ Sectional Dismantling
- ✦ Hedges Reduced and Trimmed
- ✦ Dead Wood Removed
- ✦ Fruit Tree Pruning
- ✦ Tree Planting
- ✦ Fully insured and Skilled Arborist
- ✦ Member of the Royal Forestry Society

***Contact us today for a free quote***

Telephone: **01234 828895**

Mobile: **07949 368374**

Email: **[simonowen@treespecific.co.uk](mailto:simonowen@treespecific.co.uk)**

**[www.treespecific.co.uk](http://www.treespecific.co.uk)**



# DAILY GRUNCH BIG MATCH

## *RISELEY SPORTS 0, THE 61FC (LUTON) 1*



Riseley Sports, sky blue shirts, exited the Bedfordshire FA County Senior Trophy when they suffered a 1-0 defeat at Gold Street against South Midlands League Division Two side The 61 FC (Luton).

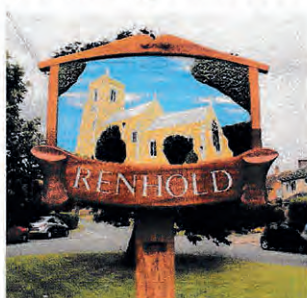


## RENHOLD VILLAGE HALL



### Come and join us!

Renhold Village Hall is a registered charity (charity number 300059) which is run by a management committee of volunteers. The committee is responsible for maintaining and running the Village Hall, which provides facilities for social activities such as Brownies, line dancing, keep fit, carpet bowls, Parish Council meetings, Tea and Teeny Tots, self-defence, kickboxing, anniversaries, and children's parties.



**We're looking to welcome new trustees onto our committee.**

You don't have to have any special qualifications, and it doesn't matter what age you are, as long as you are 18 or over, and you either live in Renhold itself or within a reasonable travelling distance.

#### BENEFITS OF BEING A TRUSTEE

Becoming a trustee is a fantastic way to give something back to our village community. You'll be playing an integral part in the way the Village Hall is run, ensuring we remain sustainable and financially viable.

Getting involved as a charity trustee is a great way to put your skills to use, but it is also be an opportunity to learn new things, as well as meeting new people and making new friends.

#### TIME COMMITMENT:

- 9-10 meetings each year
- Voluntary sub-committees
- Occasional availability to open and close the hall for events / groups

#### WOULD YOU LIKE TO FIND OUT MORE?

Please email [renholdvillagehall@yahoo.com](mailto:renholdvillagehall@yahoo.com)



# PLEASE SUPPORT OUR LOYAL ADVERTISERS



# GRUNCH FOOTBALL

**REVIEW:** Riseley Sports exited the **Bedfordshire FA County Senior Trophy** when they suffered a 1-0 home defeat against The 61 FC (Luton) on 16th December.

After a scrappy first half, it was goalless at the break but the visitors broke the deadlock in the second period with an effort from Oliver Manning.

In the **Bedfordshire County League Premier Division**, AFC Oakley saw their title aspirations dented when they went down 3-2 at Flitwick Town despite goals from Chisom Amadi and Joe McDonagh.

Wootton Blue Cross strengthened their position at the top of **Division One** with a 3-0 victory over Renhold.

AFC Oakley Development suffered a 3-1 home defeat against Harlington Juniors despite a goal from Omojiseolun Bankole.

Sharnbrook Reserves bagged a fantastic 7-0 away victory in **Division Two North** against

Sandy with Joshua Marshall firing home four of the goals with the others coming from Max Brandon, Zack Baker and Hayden Dunn.

M&DH Clapham suffered their fourth consecutive home defeat when they went down 4-2 against Bande Rouge despite goals from Louis Lee and Ewan Macleod.

Turvey went down 2-0 at home to second placed Atletico in **Division Four**.

AFC Oakley's trip to Langford in the **Bedfordshire FA County Senior Trophy** was postponed on Tuesday 19th December.

**FIXTURES - 6th January: County Senior Trophy:** Langford v AFC Oakley **Premier Division:** Elstow Abbey v Riseley Sports; Crawley Green Reserves v Sharnbrook **First Division:** Renhold v AFC Oakley Development. **Division Two North:** Sharnbrook Reserves v Sandy; Bande Rouge v M&DH Clapham Sports. **Division Four:** M&DH Clapham Sports Reserves v Meltis Rangers.



APC DESIGN AND PLANNING

Architectural Design Service  
Planning Permission  
Building Regulations  
Listed Building Consent  
Change of Use

01234 782332 - 07766 656363

enquiries@apcdesignltd.com • www.apcdesignltd.com



# SHARNBROOK

## GOLF CLUB

Play unlimited golf for less than £10 a week

[sharnbrookgolfclub.co.uk](http://sharnbrookgolfclub.co.uk)

**7th Hole at Sharnbrook**



**Private club for members and their guests only**

Peaceful 9 hole par 68 mature parkland course

No winter greens No tee time booking

£480 for men, £320 for ladies Concessions for young and old

**Contact 07990 622206**

or email [membership@sharnbrookgolfclub.co.uk](mailto:membership@sharnbrookgolfclub.co.uk)





# GRUNCH SPORT

**ROAD RUNNING:** The 42nd Stevington 12km road race takes place on Sunday 28th April. This is the week before the Milton Keynes Marathon Weekend. The Stevington run goes through Oakley and Pavenham. The entry fee is £21 for affiliated runners and £23 for non-affiliated. There is a £3 discount for entry before the end of November. Further details see the Stevington 12k Facebook Page.



● Riseley sporting celebrity 'Pickle' has appeared on the Northants Flyball Team's Advent Calendar.

Picture: Northants Flyball Team



● Sharnbrook Bowls Club members Richard Beard, left, and Andrew Manning received their county championship trophies at the Bowls Bedfordshire annual presentation. Richard won the singles title and Andrew was runner-up in the two-wood competition.

[www.ousevalleyphysio.co.uk](http://www.ousevalleyphysio.co.uk)

## Claudia von Caron PHYSIOTHERAPIST

- Back pain & sciatica
- Neck & shoulder pain
- Whiplash & headaches
- Sports injuries
- Work related disorders
- Repetitive strain
- Injuries to joints & soft tissues
- MS & stroke

Mrs Claudia von Caron MCSP, Chartered Physiotherapist

**Ouse Valley Physiotherapy Practice**

3 The Drive, Sharnbrook, Bedford MK44 1HU

[claudia@ousevalleyphysio.co.uk](mailto:claudia@ousevalleyphysio.co.uk)

Call 01234 781777



BODY



HARMONY







**Soulbrook**  
Property Services

**Extensions**



**Renovations**



**Carpentry & Joinery**



**Bathrooms**



**Kitchens**

**01234 782558**

**07731 818990**

**[www.soulbrook.co.uk](http://www.soulbrook.co.uk)**