

THE DAILY GRUNCH

SERVING VILLAGE COMMUNITIES IN NORTH BEDFORDSHIRE

Produced by Grassroots Publications

Previously The Rural Grunch

07725 812963

Email: dailygrunch@outlook.com

Web: www.grassrootspublications.co.uk

VOLUME 1 - ISSUE 1117

31st January 2024

**'WHERE HAS OUR
PATH GONE?'**
*PICTURE
ANDY GLANVILLE*

**'GOODBYE
CHEQUERS'**
SEE PAGE 19

**THEATRE
COVERAGE**

SEE PAGES 28-31

**SPORTS
COVERAGE**

SEE PAGES 34-39



Emma Victoria

HYPNOTHERAPY



- Stress and Anxiety

SOLUTION FOCUSED HYPNOTHERAPY

- Depression

CAN HELP YOU MOVE FORWARD

- Fears and Phobias

- Addictions

- Weight Management

BOOK A FREE INITIAL CONSULTATION

- Fertility

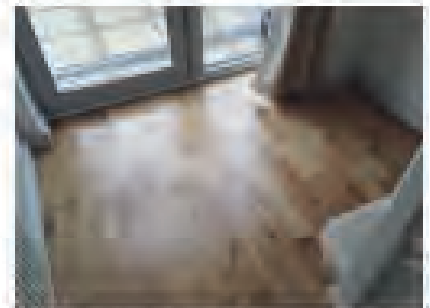
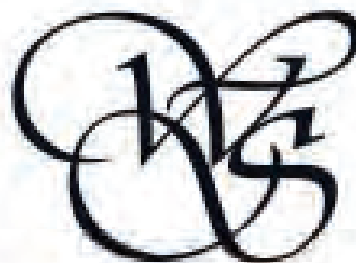
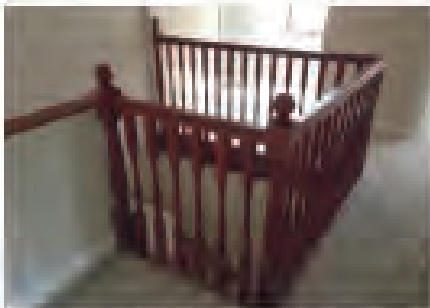
WITH EMMA

- For Children

- And more...

www.emmavictoriahypnotherapy.co.uk

Near Sharnbrook **07550 098029**



WSC Carpentry

Friendly – Reliable – Professional

we cover all aspects of carpentry, from skirting
& hanging doors to brand new kitchens, supplied & fitted.

We will help you in anyway possible to make
your dreams a reality.

We never leave a job unfinished.

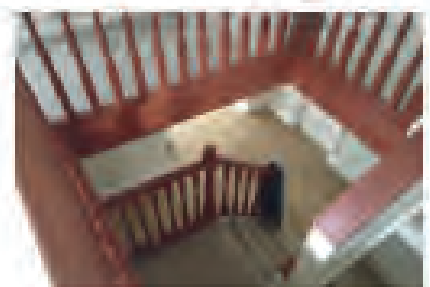
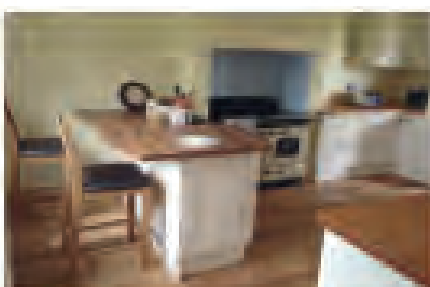
Please feel free to contact us for a free
no obligation quotation.

Fully insured.

Tel: 07753328001

wscarpentry@contractor.net

www.wscarpentry.co.uk



PAGE CHANGES TO THE ONLINE DAILY GRUNCH

To assist our readers we have expanded our Key Changes section.

This allows regular readers to see what has changed at a glance in the editions that they may have missed.

SEE RATE CARD ON PAGE 5

Front Cover Picture: *Those dogs were not amused when they discovered their path had disappeared under flood water at Sharnbrook.*

Picture: *Andy Glanville*

CONDITIONS OF ACCEPTANCE

Although every effort will be made to meet advertisers wishes, the publishers do not accept responsibility for inaccuracies in advertisements or in consequences arising, nor do they guarantee the insertion of any advertisement on a specified date, or in a specified section of the paper. Furthermore, the publishers do not accept any responsibility for one or more of a series of advertisements being omitted for any cause whatsoever. They reserve the right to amend or omit or reclassify or suspend any advertisement previously ordered without giving a reason or prior notice to the advertiser. No responsibility is accepted for the loss or damage to copy, or error in the printing. It is the responsibility of the advertiser to ensure conformity with the Trade Description Act 1968, Sex Discrimination Act 1975 and Business Advertisements (Disclosure Order 1977). All advertisements are accepted in good faith. Placing an order with THE DAILY GRUNCH will signify acceptance of the above conditions.

Artwork forming part or whole of any advertisement prepared by THE DAILY GRUNCH on behalf of any advertiser may not be used in any other publication whatever without permission of the publishers.

KEY CHANGES TO THE DAILY GRUNCH FROM THE LAST ISSUE

31st January: *Page 13*

30th January: *Page 37*

29th January: *Page 17, Page 35*

28th January: *Page 30*

27th January: *Page 29*

26th January: *Page 34, Page 37*

25th January: *Page 23*

24th January: *Page 9*

23rd January: *Page 12, Page 17, Page 37*

22nd January: *Restructure to 40 Pages. Includes New Page 10, Page 11, Page 25, Page 34*

AS ALWAYS WE ENCOURAGE YOU TO SEND US YOUR NEWS AND DETAILS OF ANY EVENTS YOU MAY BE HOLDING.

Email us at

dailygrunch@outlook.com

Deadline: Approx two working days before publication - for example Friday = 10am Wednesday

CONTACT OUR ADVERTISERS

ACCOUNTANCY/ADMINISTRATION

SJ Tax & Accounting 07899 808592

BEAUTY

Hazel Kaye 01234 826502
Body and Soul 07894 807653

EDUCATION

Kymbrook Pre-School 01234 376190
Maths Tuition 07456 551899

ELECTRICIANS

DH Electrical 01234 604121
John Sinclair Electrical 07815 903467

ENVIRONMENT

Ace Pest & Hygiene 01234 604211

ESTATE AGENTS

Carr Estates 01832 778800
Lane & Holmes 01234 327744

FENCING AND GROUNDWORK

CG Fencing 07895 679065
GP Services 07932 002937
Folly Fencing 07889 272348

FOOD

TE Brown Butchers (Rushden) 01933 350866
Zeera Indian Restaurant (Clapham) 01234 364447

GARDENING

JR Gamblen 07712 778231
Green Thumb 01234 709345
Bri Ag 01234 376513
Tree Specific 07949 368374

HEALTH

Emma Victoria Hypnotherapy 07550 098029
Simply Flow www.simplyflow.co.uk
Coreform Pilates 07891 862680
Medulla Holistic Therapy 07779 088281

Claudia von Caron Physio

01234 781777

HEATING

BBS (Boiler) 07811 854039

LEISURE

Shotokan Karate 07900 196600
AV Air Flight School 07411 326272
Ace Caravan Services 07780 471682
Sackville Flying Club 07774 291283
Sharnbrook Golf Club 07990 622206

MAINTENANCE

Soulbrook Property Services 07731 818990
Andrew Blair Carpet Cleaning 07867 499792
Village Handyman/Building Serv 07951 993093
John Simmons 07443 224944
G & L Windows 01234 771100
WS Carpentry 07753 328001
Lee Property Developments 07747 445470
AD House/Garden Maintenance 07542 592305
Tony Pay Chimney Sweep 07899 016129
Zack Painter 07513 549843
Franklin Roofing and Property 07747 785320

MEMORIALS/METALCRAFT

Wrighton & Barker 01234 352023
Orchid Farm Metalcraft 07789 496578

PETS

K9 Kuts 07538 276993
Penhazy Parlour 07768 194367
Abab cab 07860 837043

**ADVERTISING
RATE CARD ON
PAGE 5**

WELCOME TO THE DAILY GRUNCH

The online Daily Grunch celebrated its third anniversary on 12th April after replacing the printed Rural Grunch, which ceased to exist when Prime Minister Boris Johnson announced the first Covid-19 Lockdown on 23rd March 2020.

The Daily Grunch has allowed us to offer greater coverage for our readers especially as we aim to update on a daily basis - now for at least 300 issues per annum.

We are now able to covering a wider area and include most of the villages in the North-East Bedfordshire constituency.

Some people enquire about the old Rural Grunch but unfortunately it would not have been able to continue on a viable basis particularly with the constraints imposed because of Covid-19.

There have been favourable comments for The Daily Grunch especially with the type of coverage we can now offer.

However, we will not be able to ascertain how successful the change will be until next summer.

This is because we will not be at full capacity until then because most of the community events that we would aim to give full coverage have been cancelled for this summer.

Despite this, we are still able to give extensive sport coverage and we are looking to increase our support for the local theatre world.

We are still aiming to continue to support the local business community by offering competitive advertising in the online magazine.

We have adjusted the pricing to suit an online magazine and these prices appear on this page. And during tier and lockdown periods we have not charged so have given complimentary issues to our loyal advertisers.

We had to suspend production from 27th September to 29th November 2022 due to eye health issues.

Therefore the 300th issue for 2022-23 was reached on 19th June.

Graham White

RATE CARD

ADVERTISING PRICES

A NEW RATE CARD WILL COME INTO EFFECT FROM EARLY FEBRUARY 2024.

FURTHER INFORMATION WILL BE AVAILABLE DURING JANUARY 2024

WE WOULD LIKE TO WISH ALL OUR ADVERTISERS AND READERS A MERRY CHRISTMAS AND A HAPPY NEW YEAR

AS ALWAYS WE ENCOURAGE YOU TO SEND US YOUR NEWS AND DETAILS OF ANY EVENTS (VIRTUAL) YOU MAY BE HOLDING.

Email us at

**grassrootspublications@btconnect.com
ruralgrunch@btconnect.com**

Deadline: Approx two working days before publication - for example Friday = 10am Wednesday

Collection Calendar

1

Please ensure that your bins are out for collection by 6am on your collection day. Missed collections must be reported within 48 hours of your scheduled collection. Visit www.bedford.gov.uk/recycling to report a missed collection.



Remember!

Garden waste collections are suspended from 1st December to 1st March.

December 2023 and January 2024 Date Changes

Recycling only

Mon 25 Dec	moves to	Sat 23 Dec
Tues 26 Dec	moves to	Weds 27 Dec
Weds 27 Dec	moves to	Thurs 28 Dec
Thurs 28 Dec	moves to	Fri 29 Dec
Fri 29 Dec	moves to	Sat 30 Dec

Rubbish only

Mon 1 Jan	moves to	Tues 2 Jan
Tues 2 Jan	moves to	Weds 3 Jan
Weds 3 Jan	moves to	Thurs 4 Jan
Thurs 4 Jan	moves to	Fri 5 Jan
Fri 5 Jan	moves to	Sat 6 Jan

Key

Red Outline =
Date Change

Orange =
Recycling Only

Purple =
Recycling and Garden

Grey =
General Rubbish

December 2023

M	T	W	T	F
				1
4	5	6	7	8
11	12	13	14	15
18	19	20	21	22
25	26	27	28	29

January 2024

M	T	W	T	F
1	2	3	4	5
8	9	10	11	12
15	16	17	18	19
22	23	24	25	26
29	30	31		

February 2024

M	T	W	T	F
			1	2
5	6	7	8	9
12	13	14	15	16
19	20	21	22	23
26	27	28	29	

March 2024

M	T	W	T	F
				1
4	5	6	7	8
11	12	13	14	15
18	19	20	21	22
25	26	27	28	29

April 2024

M	T	W	T	F
1	2	3	4	5
8	9	10	11	12
15	16	17	18	19
22	23	24	25	26
29	30			

May 2024

M	T	W	T	F
		1	2	3
6	7	8	9	10
13	14	15	16	17
20	21	22	23	24
27	28	29	30	31

June 2024

M	T	W	T	F
3	4	5	6	7
10	11	12	13	14
17	18	19	20	21
24	25	26	27	28

July 2024

M	T	W	T	F
1	2	3	4	5
8	9	10	11	12
15	16	17	18	19
22	23	24	25	26
29	30	31		

August 2024

M	T	W	T	F
			1	2
5	6	7	8	9
12	13	14	15	16
19	20	21	22	23
26	27	28	29	30

September 2024

M	T	W	T	F
2	3	4	5	6
9	10	11	12	13
16	17	18	19	20
23	24	25	26	27
30				

October 2024

M	T	W	T	F
	1	2	3	4
7	8	9	10	11
14	15	16	17	18
21	22	23	24	25
28	29	30	31	

November 2024

M	T	W	T	F
				1
4	5	6	7	8
11	12	13	14	15
18	19	20	21	22
25	26	27	28	29

TAKE A SHORT CUT BY SUE

Many people are now reading The Daily Grunch but for some it is a new experience.

For a few, it may be too many clicks or you cannot remember the name of the website.

There is a little trick:

Go to the www.grassrootspublications.co.uk Home Page where the link to The Daily Grunch is located. In the top right hand corner of this page you will see 'three vertical dots'. Click on these and you will see a list of options.

Choose 'Add to Home Screen' and you should have an icon for Grassroots Publications in the favourites area or something similar on your device. Then any time you want to access The Daily Grunch you only have to click on this icon to take you to the link.

If you want to find a specific article in The Daily Grunch try this



Ctrl + F to find the subject/word you are looking for. This avoids trying to find the elusive article.

For example: Open The Daily Grunch – Press **Ctrl + F** which will open a small box, Type in the box the topic/number you are looking for. Say for example - 'Riseley'.

You will find 16 entries in the 27th October.2020 edition.

Sue
www.renholdvillage.co.uk

SI TAX & ACCOUNTING SERVICES

QUALIFIED ACCOUNTANT FCCA ATT

Professional and friendly service
Sole Traders, Limited Companies
Partnerships, Business Start-ups
Bookkeeping, Payroll, CIS
Subcontractors
VAT & Tax

sally@sjtax.co.uk
01234 831997
07899 808592

John Sinclair Electrical

ELECSA
Part P

Domestic & Commercial

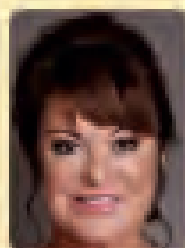
- * Household Electrics
- * Lights & Sockets
- * Showers & Cookers
- * Rewires & Additions
- * Fuse Boxes
- * Security Lighting
- * Competitive Prices
- * 25 Years Experience
- * Alarm Systems & CCTV

Part 'P' Registered
Call John for A Free Estimate
Tel: 01234 866838
Mobile 07815 903467

Voted N° 1 Salon in the UK

Hazel Kaye Hair, Beauty & Facial Aesthetics

Order Products/Book Appointments Online
www.hazelkaye.com



"We look forward to seeing you soon!" Hazel, Proprietor

Stockists of premium hair, beauty & fragrance brands and gift vouchers



40 High Street, Oakley, Bedfordshire, MK43 7RG
Tel: 01234 826502, e: hazel@hazelkaye.com



GRUNCH OPINION

What is the future of the local pub in the north Bedfordshire villages?

It was sad to see the Chequers pub in Yelden reduced to rubble but I fear others could follow in years to come.

An interesting comment appeared on Facebook in a discussion about a pub in the area - 'they are a business not a charity'.

What this means is that if the pub is not getting enough people through the doors then it will not survive. The modern terminology is footfall.

These are difficult times for the pubs with increasing bills, which in some cases are crippling. This means that the prices on the menu have to increase.

But we are in the middle of a 'cost of living crisis' where many cannot afford a night out especially if it is about £120 for four people as stated in a review on one local pub.

I am afraid this kind of price is a special occasion treat which happens once or twice a year, not every weekend.

The difficulty is that the big chains like Wetherspoons, Beefeater et al appear to be coping better.

For instance, one local pub and Beefeater both charge about £18 for a roast dinner with all the trimmings.

However, Beefeater send their regular customers a special voucher which allows you to have 40% off your main meal and is valid for more than one person in your party. This means the roast dinner is now about £10.80. How can a local pub cope with that?

I recently wanted to eat at a local pub and chose between two. One had a smaller menu at realistic prices while the other had several items over £20 plus macaroni cheese at £12.95.

It is also interesting to note that many villages now have a village bar evening, including one just yards from the local pub. How can a pub survive in this type of climate?

Graham White

DAVID JAMES
WWW.DAVIDJAMESKITCHENS.CO.UK



We are a local manufacturer of beautiful kitchens. We sell direct to save you money. The factory showroom has an extensive display of different styles.



**SAVINGS ON ALL KITCHENS
& Up To 25% Off Top Brand
Appliances**

**PULLOXHILL BEDS MK45 5EU
01525 722230**



KEYSOE BREAKFAST



The Keysoe Breakfast was an initiative that started last year with patrons having the chance to have a full English or a sandwich/bap of your choosing.

The event was held at The Village Hall and the organisers were pleased with the turnout. The next Breakfast is scheduled for Saturday 17th February.

GREAT STAUGHTON INDOOR MARKET



Upper Dean's 'Mr Pickles', left, was among the stallholders at the inaugural Great Staughton Indoor Market, which attracted a huge crowd..

There was a fine selection of crafts and food stalls and the next event is on Saturday 17th February.

GRUNCH NEWS

North East Bedfordshire MP Richard Fuller is urging local groups to consider applying for the Community Ownership Fund.

The Community Ownership Fund is a £150 million fund over four years to support community groups take ownership of assets which are at risk of being lost.

It forms part of the government's wider levelling up agenda, building opportunity and targeting support towards places where community assets can make the most difference.

The Fund will be running until March 2025 with four bidding windows per financial year, so there is plenty of opportunity for interested groups to submit or resubmit an application.

Unsuccessful applicants are provided feedback which signposts them to the relevant sections of the guidance documents which applicants

should use to help them to strengthen their bids. They are able to continue working on their bids and apply to the Fund in future bidding windows.

Round 3 Window 3 is currently open and will close on 31st January.

The prospectus for Round 3 can be found here- <https://www.gov.uk/government/publications/community-ownership-fund-prospectus/community-ownership-fund-prospectus--3>

Richard Fuller MP said: "This fund is about safeguarding our small, but much-loved assets in our towns and villages such as the community centres, pubs, sporting facilities that mean so much to local communities and ensuring local people can support and continue benefiting from the treasured local institutions that matter to them most.

"I would certainly encourage groups to apply."

WRIGHTON & BARKER

Independent Monumental Masons

Family business

Established over 100 years

Large selection of memorials on display

Home visits by appointment

Cleaning and restoration work carried out

Call for free brochure

01234 352023

or visit our showroom at

24a Foster Hill Road, Bedford

MK40 2EN

www.wrightonandbarker.co.uk

email - office@wrightonandbarker.co.uk



GRUNCH NEWS



● The All Saints Church, Renhold Mini Market and Coffee Morning on 27th January raised over £800. There were plenty of craft, bric-n-brac, preserves and cake stalls.



R.J.F. Plumbing, Heating
& Mechanical Services Ltd

Roger Flanagan
Director

38 Hookhams Lane
Renhold
Bedford MK41 0JT

Office: 01234 771396
Mobile: 07717 756677
Email: info@rjf-plumbing.co.uk



PLEASE SUPPORT OUR ADVERTISERS



BRITISH
PROPERTY
AWARDS

2021



GOLD WINNER

ESTATE AGENT
IN BEDFORD

Have you seen... We **won!**
For a winning service, **talk to us.**

01234 327744 | sales@laneandholmes.co.uk | laneandholmes.co.uk

GRUNCH NEWS



● The Riseley Flood Group are pictured clearing debris from Riseley Brook following the recent bad weather. The Group managed the flood in the High Street following Storm Henk.

Picture: Riseley and Friends Facebook



● Thurleigh's Every Voice Choir returned after the festive break on 11th January with a new repertoire of music from Les Miserables to classical greats. The Choir, that does include ladies, meets on a Thursday at 7.30pm at St Peter's Church.

Picture: Laura Backhurst



**93A High Street, Rushden
NN10 0NZ**

01933 350866

app.timbrownsbutchers.com

enquiries@tebrownbutchers.co.uk

**Beef, Lamb, Pork, Chickens, Sausages, Bacon
and so much more**





Andrew Blair

Professional Carpet and Upholstery Cleaning

Phone or Whatsapp 07867499792

e-mail arblair64@yahoo.co.uk

website

<https://andrewblairprofessionalcarpetandupholsterycleaning.com>

PLEASE SUPPORT OUR ADVERTISERS



ABACAB DOG GROOMING

New dog grooming service in Odell. We offer a personal service aimed to meet the needs of you and your dog, catering for all breeds large or small. Our services include:-

- Clipping/trimming
- Hand stripping (Terriers and Spaniels)
- Nail trims

TELEPHONE:- 01234 720825 OR 07860 837043



Franklin Roofing and Property Services Ltd

For all building maintenance issues

Please call Jonathan on 077 477 85320

Or 01234 709674

For a free no obligation quotation

From full house refurbishments to extensions to

kitchen fitting and decoration

Full roof replacements to small repairs

High access specialists

<https://en-gb.facebook.com/franklinroofingandproperty/>

www.franklinroofingandproperty.co.uk

Company based in Riseley, Bedfordshire.

PLEASE SUPPORT OUR ADVERTISERS

FOR YOUR DIARY

Saturday 3rd February: North Beds Ramblers Walk - Sandy at 1pm. Meet at main Sandy car park. 7.5 miles walk. Walking towards Everton then returning via RSPB on Sandy Heath. For further details go to www.ramblers.org.uk/north-bedfordshire

Saturday 3rd February: St Mary's Church, Keysoe at 12 noon for 12.30pm. Candlemas Lunch. The cost is £7.50 which includes lunch, pudding and tea or coffee. The organ will be played by Rev. Tim Wilson during the lunch period. Please book through either Peggy Robins on 708598 or Penny Heming on 378878 for catering purposes.

Saturday 10th February: Sharnbrook Mill Theatre at 7.30pm. 'Is There Anyone There?' An Evening of Clairvoyance with Wayne Marriott. Tickets £10 and are available from www.sharnbrookmilltheatre.co.uk

Friday 16th February: Colmworth Village Hall at 7.30pm. Colmworth & Neighbours History Society talk by Dr Jonathan Rodell on the 'History of Methodism in Bedfordshire'. Membership is £12.50p per annum but visitors can attend meetings for a £4 donation

Saturday 17th February: Keysoe Village Hall. 9am-11am. A Big Breakfast. No Booking. Just turn up and enjoy. Full English £7, Small English £4.50. Breakfast Bap £3.50.

Saturday 17th February: Great Staughton at 11.30am-2.30pm. Great Staughton Indoor Food and Craft Market. Refreshments will be available including tea, coffee and hot chocolate. For further information email: greatstaughtonindoormarket@gmail.com

Tuesday 20th February: Addison Centre, Kempston, Bedford. 2.15pm. Bedford National Trust Meeting. Speaker Ann Jackson on 'The Atlantic and Back'. How a pint of water, a picnic table and a force 11 changed my life. The tale of a gullible young lady who agreed to follow in the footsteps of Christopher Columbus in a 31ft yacht. An illustrated account of the 1989 4th Atlantic Rally for Cruisers (The ARC). The preparation, the basic navigational equipment used for the crossing, the mishaps that occurred along the way and the more eventful return journey." Everyone welcome. No need to book. Plenty of parking available. Refreshments available before the meeting. There will be a small entry cost. For further information contact Betty Thomas on 01480 860421.

Saturday 2nd March: Bletsoe Village Hall from 8.30am Bletsoe Spring Breakfast. Includes Full and Continental Breakfast. Further details to follow.

Saturday 18th May: Pertenhall from 9am. North Bedfordshire Young Farmers Rally. Judging of livestock, food, crafts etc. Stalls and entertainment for all the family throughout the day

Every Sunday: Great Barford Village Hall at 10am. Great Barford Run Together. Running for fun for all standards including novices.

Every Thursday: Riseley Village Hall 3.30-5pm. Riseley Bus Stop Cafe for School Years 7-13

First Friday of the Month: Keysoe Village Hall at 7.30pm. Bar Night

Every Saturday: There may be football matches at Oakley, Riseley, Sharnbrook and Thurleigh

FOR YOUR DIARY

£1 per insertion per 30 days for a max 30 word insertion, cheque payable to Grassroots Publications, may be sent to Grassroots Publications, 2, Strawberry Hill Cottages, Knotting Green, Bedford, MK44 1AB Use this section to advertise any community or social event that may be coming up in the forthcoming months. It can include sports events. We reserve the right to omit any dates if payment is not made. If in doubt feel free to contact us on 01234 781374 or email: dailygrunch@outlook.com. Price includes VAT

Penhazy Parlour



Qualified dog groomers

New clients receive 10% off first treatment

Based in Little Staughton

We welcome any breed of dog big or small from nervous to happy

All treatments are one to one basis

Set in a stress free environment

We can deal with any needs that your dog may require

We offer:

Clipping

Nail clipping

Hand stripping

Spa days

And much more

Ring Katie on 07774519694 or Sally on 07768194367

Penhazy Parlour



**PLEASE SUPPORT OUR
LOYAL ADVERTISERS**

GRUNCH NEWS

There was always hope that The Chequers at Yelden would survive but that ended on 11th January when it was reduced to rubble.

It had been empty since 2016 and its final years before closing were at best 'chequered' due to spiralling rent prices.

The Chequers was a fine venue for the special occasion and it played its part in the annual Yelden Strawberry Fayre.

The site is set to be some form of residential



development but locals will be reflecting on its long history.

The Bedfordshire Archives indicate that The Chequers may have started out as The White Horse with a mention in 1803. In 1822 the tenant of the Chequers was Thomas Wagstaff and was described at the time as the only pub in Yelden.



for a professional and reliable
Painting & Decorating Service

(20 years experience in North Bedfordshire)

- Full written estimation given on request
- All jobs considered
- Interior and external decorating
- wallpapering
- Old and new property maintenance

Contact: Zack Włodarczyk

Melchbourne, Bedfordshire
01234 708983 or 07513 549843



LEE PROPERTY DEVELOPMENTS

• EXTENSIONS	• PATIO & FENCING
• BATHROOMS	• DECORATION
• KITCHENS	• ROOFING




FOR A FREE ESTIMATE CONTACT
LEE CONSTABLE
MOBILE 07747 445470
OFFICE 01933 359780
leec.developments@hotmail.co.uk

BRIDGET'S COCKTAIL COLUMN



NEGRONI SBAGLIATO

This is Olly Smith's take on the classic Italian cocktail.

Ingredients and Method

Pour 25ml Campari and 25ml Sweet Vermouth into a glass, add ice and top up with Prosecco. Stir gently and garnish with a chunky slice of orange.



Thanks to Olly Smith

AV AIR FLIGHT SCHOOL

Modern Aircraft

Try a short flight

If local see your house and be surprised how easy it is to fly

Fully qualified instructor - Adrian

Contact: avairflightschool@gmail.com

Mobile: 07411 326272



SARTORI WELLNESS

Therapeutic Massage

Feeling tired, stressed, stiff aching muscles, do you work on your feet all day?
Come unwind and relax with a therapeutic massage.
Choose from a Thai Foot Massage, Indian Head Massage or Tension Relief Massage.
Fully qualified and insured. Ladies Only. Based Rushden Northamptonshire

Contact Mary To Book

Tel: 07464 100195

Email: sartoriwellness@gmail.com

www.facebook.com/sartoriwellness



**SARTORI
WELLNESS**

PLEASE SUPPORT OUR ADVERTISERS



professional dog grooming

**Fully Qualified and Insured Dog
Groomer. I work one on one with your
dog, with a range of services.**

**63 High Street, Wilden,
Bedfordshire, MK44 2QD**

**07538276993/
k9kutsgroomers@outlook.com**

Facebook– k9kutsgroomers

GRUNCH NEWS

□ Residents in north Bedfordshire have the chance to give their views on bus travel.

Bedford Borough are conducting a survey on public transfer before making a decision on the forthcoming round of bus contracts.

Currently Stagecoach run the service between Bedford and Kettering along with the more local route between the county town and Oakley.

Grant Palmer have the contract for many of the rural routes including the troubled Number 25 service that runs from Bedford to Rushden via Harrold.

To give your views on the state of the bus services go to www.bedford.gov.uk/your-council/have-your-say/consultations/bus-usage-survey-2024

□ The Dean Duck Dash will take place on Saturday 23rd March at 11am. Although details are still to be confirmed, the Dash is usually followed by a Fayre at the Eileen Wade School.



● The next meeting of the Bedford National Trust on Tuesday 20th February will feature a presentation by Ann Jackson, who will talk about her experiences during the 1989 Atlantic Rally for Cruisers. The talk is entitled 'The Atlantic and Back'. The meeting takes place at the Addison Centre, Kempston at 2.15pm.



Telephone 01234 709163
or 07899 016129



Qualified Chimney Sweep



Riseley based professional Chimney Sweep.

Fully qualified member of The Guild of Master Sweepers.

Police CRB checked and £2 million liability insurance.

Service reports that are recognised by all insurance companies.

Specialist equipment used for Woodburning Stoves & Lined Chimneys.

Recommended by local Stove / Fireplace installers.

CCTV inspections and reports.

Contact Tony, your local Chimney Sweep.

www.black-horse-chimney-sweep.co.uk

e-mail tnav59@btinternet.com

PLEASE SUPPORT OUR ADVERTISERS



Tree**specific**^{Ltd}

tree management

A comprehensive range of tree services from a local dedicated tree surgeon with twenty years experience within the tree industry

- ✦ All aspects of Tree Maintenance and Tree Care
- ✦ Tree Felling
- ✦ Crown Reduction/Thinning
- ✦ Sectional Dismantling
- ✦ Hedges Reduced and Trimmed
- ✦ Dead Wood Removed
- ✦ Fruit Tree Pruning
- ✦ Tree Planting
- ✦ Fully insured and Skilled Arborist
- ✦ Member of the Royal Forestry Society

Contact us today for a free quote

Telephone: **01234 828895**

Mobile: **07949 368374**

Email: **simonowen@treespecific.co.uk**

www.treespecific.co.uk



Mr Pickles Jams and Chutneys

*Vegetarian and
Vegan friendly
products*

*Based in the Village of Upper Dean.
Mr Pickle's products are all Homemade with
no artificial colours or preservatives.
Keep it natural.
Keep it local.*



For more information contact us at
mpicklesupperdean@hotmail.com

GRUNCH RECIPES OUR FAVOURITES

Honey and Cinnamon Tart Tasty Tudor Recipes - cadw.gov.wales

1 Shortcrust Pastry Case
170g cream cheese
6tbs clear honey
85g sugar
1tsp cinnamon
2 eggs

Method

- ☐ Line an 8 inch flan dish with pastry.
- ☐ Bake blind for 10 minutes
- ☐ Mix together the cream cheese, honey, sugar and cinnamon.
- ☐ Whisk two eggs and gradually pour the mixture into the pastry case.
- ☐ Bake at gas mark 4 or equivalent for 35-40 minutes until firm to the touch and lightly brown.



Catherine of Aragon, one of Henry VIII's wives is believed to have passed through Riseley in January 1536. So we are celebrating with a typical recipe, updated to modern cooking methods. Rather than gas, a fire would have been used to cook the tart.

GP SERVICES GROUNDWORK AND DIGGER HIRE



- ☐ Mini Digger and Driver Hire
- ☐ Various Size machines
- ☐ Breaker/Auger Attachments
- ☐ Dumper Hire
- ☐ Foundations/Concreting/Drainage
- ☐ Site Clearance
- ☐ Tree and Root Removal
- ☐ Sewage Treatment Plants Installed
- ☐ Leach Fields Installed
- ☐ Road Construction/Drives
- ☐ Patios/Hard Landscaping
- ☐ Menage/Horse Arena Construction
- ☐ Muck Heap Removal
- ☐ Fencing

01234 782940
07932 002937

enquiries@gpservicesonline.com
www.gpservicesonline.com

PETER HAYES
PROPRIETOR

FULLY INSURED

GRUNCH TEASER

Previous Teaser Answer
Sharnbrook

IN WHICH VILLAGE
WOULD YOU FIND
THIS SCENE?

Answer in February



SACKVILLE FLYING CLUB

HOT AIR BALLOONING GROUP

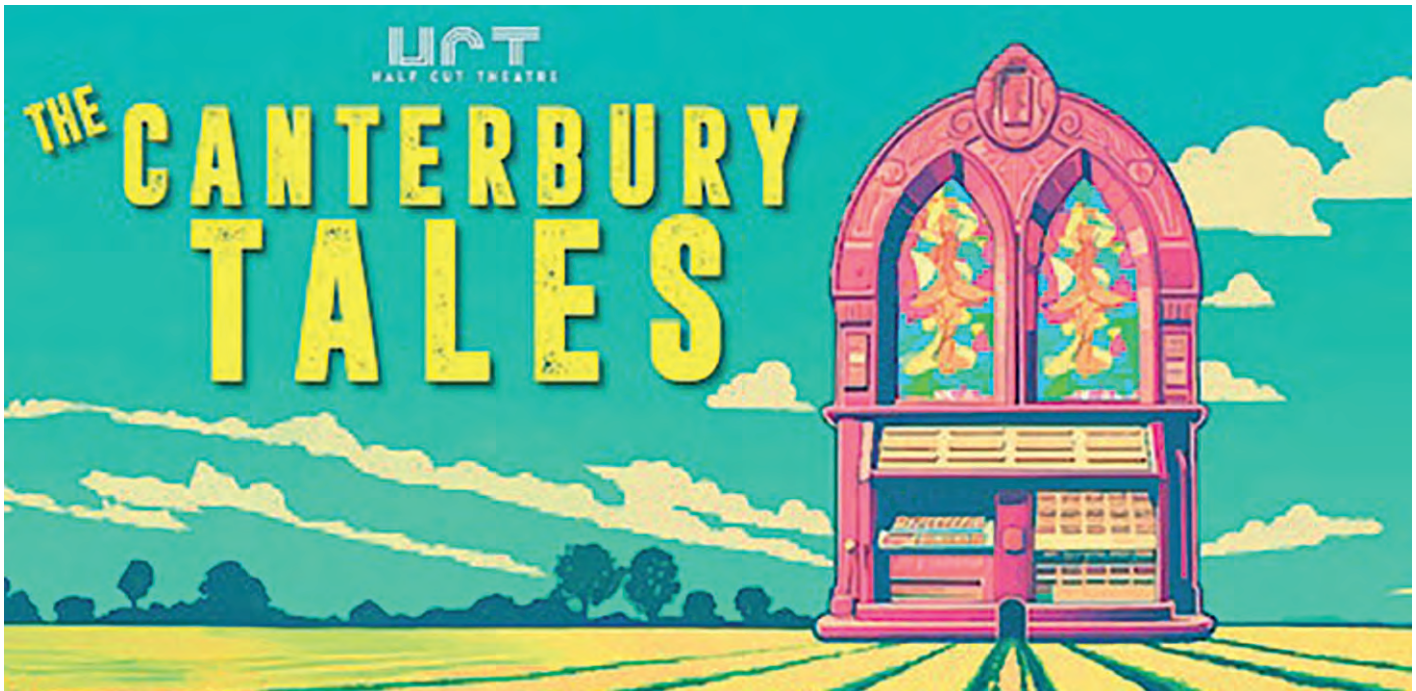
Lots of fun, little cost, great for all the family

Find out more by calling

Tim Wilkinson on 07774 291283

sackville@avnet.co.uk

GRUNCH THEATRE



● The Half Cut Theatre Company is returning to Bedfordshire with their brand-spanking-new production of 'The Canterbury Tales' in Spring 2024. Join them at St Denys Church, Colmworth on Monday 25th March at 7pm for a hilarious, musical and time-bending odyssey. As always, tickets will be Pay What You Decide after the show but make sure to reserve your places fast as the church always books out quickly and space is very limited. For further details see www.halfcuttheatre.co.uk



LEE PROPERTY DEVELOPMENTS

- EXTENSIONS
- PATIO & FENCING
- BATHROOMS
- DECORATION
- KITCHENS
- ROOFING



FOR A FREE ESTIMATE CONTACT
LEE CONSTABLE
MOBILE 07747 445470
OFFICE 01933 359780
leec.developments@hotmail.co.uk

**TAKE CHARGE
OF YOUR HEALTH!**

*simply
FLOW*

Simply Flow offer a wide range of health and fitness programs, with something to suit everybody.

From Mindful Movement to Fitness over 40, we can help improve your mobility, strength and well-being.

From Stress Management to Self Defence, we can tailor training to your specific needs.

Weekly Tai Chi classes,
personal and small group sessions,
workshops and in-house training.

Professional Instructor, 35 years experience.

www.simplyflow.co.uk

GRUNCH THEATRE

Tickets are being sold for Kiri Pritchard-McLean's Peacock show on Friday 26th July at 7.30pm during the 2024 Bedford Fringe Festival.

The Festival takes place from 18th July to 28th July with most of the tickets becoming available in March.

Kiri, however, is one of the top drawer attractions so tickets have been released early.

Star of Live at the Apollo, Have I Got News For You and QI, Kiri Pritchard-McLean is back with a brand new tour, her funniest and most personal to date.

Prepare for a joyous and uplifting show from a comedian known for making laughs from the thorniest of subjects.

'Expect sequins, social commentary, and massive laughs from the renaissance woman of UK comedy.' **ROLLING STONE**



KIRI PRITCHARD-McLEAN

CORE.FORM

Monday - 9.15am -10.15am: Keysoe Village Hall

Monday - 4pm - 5pm: Dalton Community Hall, Upper Dean

Wednesday - 11.15am -12.15pm: Keysoe Village Hall

*To book a class, or for more information,
please get in touch with*

Keziah at CORE.FORM Pilates

Tel: 07891862680

Email: coreformpilates@outlook.com

PLEASE SUPPORT OUR ADVERTISERS

GRUNCH THEATRE

Autism & Sea
Spectrum
The Place, Bedford
10th February
12pm and 3pm
Tickets: £12 Concessions: £8

Join us on an adventure with Finn, Ollie & Astrid as we explore the world of autism. This show is an introduction to our characters and how certain traits affect their everyday lives. It's their first day of school and something unexpected awaits them on their new school venture.

In this immersive show experience, no one character is the same and each experiences autism very differently just like us. *Autism & Sea LIVE* is based on a series of books written and illustrated by Amy Le Dain.



FOR FURTHER DETAILS CONTACT THE PLACE BEDFORD
www.theplacebedford.org.uk or phone 01234 354321

GRUNCH THEATRE

Life Through Windows
Produced by Chiara MacCall
The Place Theatre, Bedford
16th February at 7pm
Tickets: Pay What You Can £4-£16

In Spring 2020, photographer Chiara MacCall found a way to create community and connection during isolation. Using her permitted daily exercise, she visited families via their windows and doorways, taking portraits from the pavement capturing moments that overcame the distance between us.

All those photos of Bedford and Bedfordians taken in the early months of lockdown are being brought together for the first time in exhibition at The Place Theatre, running from 15th Feb to 31st March.

Join us at 7pm on Friday 16 February for an Evening of Reflections with photographer Chiara MacCall, hosted by Jo Hudson-Lett, with live music by My Girl The River.



FOR FURTHER DETAILS CONTACT THE PLACE BEDFORD
www.theplacebedford.org.uk or phone 01234 354321

GRUNCH THEATRE

JACKASTORY

Bedford Place Theatre Team

The Place Theatre, Bedford

10/1, 24/1, 7/2, 21/2, 6/3, 20/3, 3/4, 17/4

9.30am

Free

Our Jackastory session run fortnightly, and every week during school holidays.

Listen to members of The Place team read their chosen children's stories and discover some new favourites of your own. Each session runs for 45 minutes to an hour, with a break for refreshments.

This will be a very relaxed event with young, and old, being invited to join the readers in an intimate and friendly atmosphere, on a mound of comfortable cushions!

(Aimed at 0-6-year-olds, but all ages welcome)



FOR FURTHER DETAILS CONTACT THE PLACE BEDFORD
www.theplacebedford.org.uk or phone 01234 354321



GreenThumb
LAWN TREATMENT SERVICE

If you've been thinking about enjoying a great lawn this year – green, lush and weed-free, why not contact us today and let us bring your lawn to life.

We provide four seasonal treatments, as well as beneficial treatments to keep your lawn in tip-top condition - prices start from just £5* per month.

PRICES FROM
£5*
PER MONTH

Ask us about our annual plans, which allows you to both spread the cost and save up to 25%.

Simply call: 01234 709345 or
visit: greenthumb.co.uk

*Based on a lawn size of 40m²

NEW YEAR'S RESOLUTION

Why not try a walk with North Beds Ramblers?

We are a friendly group who walk on Saturdays:
Every Saturday afternoon, approx. 6 miles

Saturday mornings, twice monthly, 10 -12 miles

Just turn up wearing suitable footwear and clothing
Sorry only assistance dogs allowed



We walk in all weathers,
you may get wet and muddy!!

Bring refreshments
(and plenty of water in the
summer)



Interested?

Find our programme on the Ramblers website <https://www.ramblers.org.uk/north-bedfordshire>

Facebook <https://www.facebook.com/groups/northbedsramblers>

Twitter @nb_ramblers

Walks are free but if you decide to walk with us regularly we would like you to join the Ramblers

The Ramblers' association is a registered charity (1093577) and a company limited by guarantee, (No.445892). Registered Office: 1 Clink Street, 3rd Floor, London. SE1 9DG

JR Gamblen Mower Servicing & Repairs

Experienced workshop staff
specialising in:

- Ride on mowers
- Pedestrian mowers
- Compact Tractors
- Cylinder mowers
- Gang mowers
- Strimmers
- Chainsaws
- Hedge trimmers
- Cylinder & blade grinding

Free collection and delivery
Call 01234 708170/ 07712 778231

Holistic Therapist in Thurleigh

Reiki, reflexology, meditation, well-being



*Now open for
hands-on treatments*

A few moments of calm or a journey of discovery

www.medulla.space - 07779 088281

anne@medulla.space

medulla
holistic therapies

GRUNCH NEWS

TASTES LIKE HOME

Embarking on a flavour-packed adventure in Bedford, Tastes Like Home is a culinary journey spanning winter and spring 2023-24.

Generously flavoured with funding by The National Lottery Heritage Fund, with thanks to the awesome National Lottery players, and heaped with a generous portion of funding from local partners of Historic England's High Street.

Heritage Action Zone for Bedford

Meet the Chefs

Radhika Aggarwal, our London-based creative producer, is a true artist in the kitchen of creativity- she's into theatre-making, sound artistry, music, and activism. Stirring things up with her devised, ensemble-led work, she founded Echo Chamber Audio, a hub for aural storytelling and sound.

Alex Levene, our Bedford-based sous-chef, who's been orchestrating activities at The Place, Bedford from 2017-2023 and is now leading WordSetFree, where performance meets spoken word, games, civic engagement, and publishing.

Project Tasting Notes

Tastes Like Home is on a mission to uncover and share the delicious memories of food and drink ingrained in the taste buds of Bedford and its residents.

Picture this: we're hunting for stories spiced up with flavours from old restaurants, markets, stores, and corner shops.

And guess what? We're cooking up a storm with local independent establishments to engage all sorts of taste buds and unravel memories tied to the universal feast that binds us together - nourishment.

We invite you to become co-creators in this heritage arts project, utilising storytelling, shared



food, and music to delve into the concepts of 'home,' 'place,' and 'heritage,' exploring their personal significance.

We believe that food and drink are the secret ingredient for stirring the mixing pot of cultural heritage, fermenting social identity, and a brewing sense of belonging.

Often overlooked in the historical narrative, the transient nature of shops, markets, and restaurants has concealed significant portions of Bedford's story, particularly the contributions of working-class communities who have chosen to make their homes here in Bedford over the years.

What's On The Menu?

During 2024, participants and the local public will contribute to creating a map of sites of 'intangible heritage,' weaving together stories into an evolving web of cultural significance. These vital cultural landmarks will form a digital map available online.

We will be hosting a project launch event during February Half-Term at The Place Bedford.

This will feature some of the recorded stories, as well as live performances & activities. Stay tuned for the delicious details in January 2024.

Lissy Malt
The Place Theatre

DAILY GRUNCH BIG MATCH

AFC OAKLEY 1

BIGGLESWADE UTD RES 2



Any hopes that AFC Oakley, lighter shirts, had of taking the Bedfordshire County League Premier Division title took a further blow when they suffered a 2-1 home defeat against Biggleswade United Reserves.

United Reserves have struggled in the Premier Division for the past few seasons but they are now challenging for honours.

Alex Maxwell scrambled home the winner for United in time added on after Nathan

McCalla had equalised in the 61st minute. Billy Cox had given AFC Oakley the lead.

Generally, AFC Oakley struggled to get into the game during the first half against a well-organised and improved United side,

DAILY GRUNCH BIG MATCH

RISELEY SPORTS 4

AFC KEMPSTON TOWN HAMMERS 0



Youngster Freddie Spavins scored his first goal for Riseley Sports, yellow shirts, as they eased to a 4-0 victory over struggling AFC Kempston Town Hammers in the Bedfordshire County League Premier Division on 27th January.

Aaron Keech netted twice with the other goal coming from Lewis Donald.

The win pushes Riseley Sports up to eighth in the table.



RENHOLD VILLAGE HALL



Come and join us!

Renhold Village Hall is a registered charity (charity number 300059) which is run by a management committee of volunteers. The committee is responsible for maintaining and running the Village Hall, which provides facilities for social activities such as Brownies, line dancing, keep fit, carpet bowls, Parish Council meetings, Tea and Teeny Tots, self-defence, kickboxing, anniversaries, and children's parties.



We're looking to welcome new trustees onto our committee.

You don't have to have any special qualifications, and it doesn't matter what age you are, as long as you are 18 or over, and you either live in Renhold itself or within a reasonable travelling distance.

BENEFITS OF BEING A TRUSTEE

Becoming a trustee is a fantastic way to give something back to our village community. You'll be playing an integral part in the way the Village Hall is run, ensuring we remain sustainable and financially viable.

Getting involved as a charity trustee is a great way to put your skills to use, but it is also be an opportunity to learn new things, as well as meeting new people and making new friends.

TIME COMMITMENT:

- 9-10 meetings each year
- Voluntary sub-committees
- Occasional availability to open and close the hall for events / groups

WOULD YOU LIKE TO FIND OUT MORE?

Please email renholdvillagehall@yahoo.com



**PLEASE SUPPORT OUR LOYAL
ADVERTISERS**

GRUNCH FOOTBALL

REVIEW: Riseley Sports moved away from the relegation zone in the **Bedfordshire County League Premier Division** to eighth position after clinching a 4-0 home win over bottom club AFC Kempston Town Hammers.

Aaron Keech netted twice with the other goals coming from youngster Freddie Spavins and Lewis Donald.

AFC Oakley were held to a 2-2 draw by Marston Shelton Rovers with the hosts' efforts coming from Omojiseoluwa Bankole and Joel Ives.

Renhold were in **Centenary Cup** action and reached the semi-finals after bagging a 6-2 home victory over Henlow. Glenn Tumulty scored twice with the other strikes coming from Jason Allison, Shane Cox, Marko Tobdzic and Aran Hazelwood.

Renhold will face Cranfield United Reserves away in the semi-finals with the other tie being Wootton Blue Cross v Buffs.

Sharnbrook Reserves had a comfortable 5-0 away victory in the **Jubilee Cup** over Bande Rouge. In a **Division Two North** fixture, M&DH Clapham Sports went down 1-0 at home to high-flying Wilstead.

M&DH Clapham Sports Reserves pulled off an excellent 3-1 victory at Ampthill Town Colts in **Division Four** with efforts from Kyle Brewer-Allan, Joshua Hughes and Dylan Weeks. Turvey had a 4-0 win over Lidlington United Sports Club Colts.

See **Page 34** for Picture Coverage of AFC Oakley v Biggleswade United Reserves. See **Page 35** for Picture Coverage of Riseley Sports v AFC Kempston Town Hammers

FIXTURES - 3rd February: Premier Division: Riseley Sports v Queens Park Crescents; Sharnbrook v AFC Oakley. **Division One:** Lewsey Park v AFC Oakley Development; Harlington Juniors v Renhold. **Division Two North:** Sharnbrook Reserves v Caldecote Reserves. **Division Four:** M&DH Clapham Sports Reserves v Leighton Woodside Athletic; Sandy Reserves v Turvey



APC DESIGN AND PLANNING

Architectural Design Service
Planning Permission
Building Regulations
Listed Building Consent
Change of Use

01234 782332 - 07766 658363
enquiries@apcdesignltd.com - www.apcdesignltd.com

SHARNBROOK GOLF CLUB

Play unlimited golf for less than £10 a week

sharnbrookgolfclub.co.uk

7th Hole at Sharnbrook



Private club for members and their guests only

Peaceful 9 hole par 68 mature parkland course

No winter greens No tee time booking

£480 for men, £320 for ladies Concessions for young and old

Contact 07990 622206

or email membership@sharnbrookgolfclub.co.uk



GRUNCH SPORT

CRICKET: Thurleigh have quit the Four Counties League and their two teams will be competing in different competitions this summer.

The first team will be taking part in the **Northamptonshire League Division Five** and their opponents will be Bugbrooke, Burton Latimer II, Geddington II, Kettering Town II, Loddington & Mawsley II, Long Buckby, MK Air, New Bradwell, Overstone Park III, Raunds Town and Willoughby.

The second team will be in the **Bedfordshire Invitational League Division Two** and will be facing sides from the following clubs: Amptill, Clifton, Harrold, Lidlington, Riseley, Road Runners and Sandy.

ROAD RUNNING: The 42nd Stevington 12km road race takes place on Sunday 28th April and goes through Oakley and Pavenham. The entry fee is £21 for affiliated runners and £23 for non-affiliated. Further details see the Stevington 12k Facebook Page.



● Sharnbrook Bowls Club members Richard Beard, left, and Andrew Manning received their county championship trophies at the Bowls Bedfordshire annual presentation. Richard won the singles title and Andrew was runner-up in the two-wood competition.

www.ousevalleyphysio.co.uk

Claudia von Caron PHYSIOTHERAPIST

- Back pain & sciatica
- Neck & shoulder pain
- Whiplash & headaches
- Sports injuries
- Work related disorders
- Repetitive strain
- Injuries to joints & soft tissues
- MS & stroke

Mrs Claudia von Caron MCSP, Chartered Physiotherapist

Ouse Valley Physiotherapy Practice
3 The Drive, Sharnbrook, Bedford MK44 1HU
claudia@ousevalleyphysio.co.uk

Call 01234 781777



BODY



HARMONY





Soulbrook
Property Services

Extensions



Renovations



Carpentry & Joinery



Bathrooms



Kitchens

01234 782558

07731 818990

www.soulbrook.co.uk