

THE DAILY GRUNCH

SERVING VILLAGE COMMUNITIES IN NORTH BEDFORDSHIRE

Produced by Grassroots Publications
Previously The Rural Grunch
07725 812963

Email: dailygrunch@outlook.com

Web: www.grassrootspublications.co.uk

VOLUME 2 - ISSUE 20

27th April 2024

**JULIA JARMAN
BOOK SIGNING**

SEE PAGE 9

**THEATRE
COVERAGE**

SEE PAGES 28-30

**SPORTS
COVERAGE**

SEE PAGES 31-38



PAGE CHANGES TO THE ONLINE DAILY GRUNCH

To assist our readers we have expanded our Key Changes section.

This allows regular readers to see what has changed at a glance in the editions that they may have missed.

SEE RATE CARD ON PAGE 3

Front Cover Picture: Riseley author Julia Jarman's Book Signing.

Picture: Mick Watson

CONDITIONS OF ACCEPTANCE

Although every effort will be made to meet advertisers wishes, the publishers do not accept responsibility for inaccuracies in advertisements or in consequences arising, nor do they guarantee the insertion of any advertisement on a specified date, or in a specified section of the paper. Furthermore, the publishers do not accept any responsibility for one or more of a series of advertisements being omitted for any cause whatsoever. They reserve the right to amend or omit or reclassify or suspend any advertisement previously ordered without giving a reason or prior notice to the advertiser. No responsibility is accepted for the loss or damage to copy, or error in the printing. It is the responsibility of the advertiser to ensure conformity with the Trade Description Act 1968, Sex Discrimination Act 1975 and Business Advertisements (Disclosure Order 1977). All advertisements are accepted in good faith. Placing an order with THE DAILY GRUNCH will signify acceptance of the above conditions.

Artwork forming part or whole of any advertisement prepared by THE DAILY GRUNCH on behalf of any advertiser may not be used in any other publication whatever without permission of the publishers.

KEY CHANGES TO THE DAILY GRUNCH FROM THE LAST ISSUE

27th April: Page 17

26th April: Page 23, Page 35

25th April: Page 17

24th April: Page 6

23rd April: Page 8, Page 35

22nd April: Page 10, Page 17, Page 23

21st April: Page 30

20th April: Page 35, Page 36, Page 37, Page 38, Page 39

19th April: Page 17

18th April: Page 23, Page 10

AS ALWAYS WE ENCOURAGE YOU TO SEND US YOUR NEWS AND DETAILS OF ANY EVENTS YOU MAY BE HOLDING.

Email us at

dailygrunch@outlook.com

Deadline: Approx two working days before publication - for example Friday = 10am Wednesday

WELCOME TO THE DAILY GRUNCH

It will be four years on 12th April since we launched the online Daily Grunch.

This replaced the traditional Rural Grunch, which we had published and printed since March 2009.

We made the decision to go online following the Covid 19 Lockdown that came into effect on 23rd March 2020.

After Covid 19, the UK has suffered a cost-of-living crisis and it is safe to say we would not have been able to continue the magazine in its traditional form due to the increase in prices for paper and print.

As indicated in its title, we are able to update the online magazine on a daily basis and we do this 300 times a year.

This allows us to give coverage of local community events almost immediately after they have taken place rather than wait up to 31 days, which was the case with the printed monthly issue.

The same applies with advertising as we can insert material almost as soon as we

receive the copy. The online magazine is also in colour, which makes our coverage of community events more attractive.

Our goal remains the same - supporting community events and small businesses.

You will have noticed on our access page - www.grassrootspublications.co.uk - that we have produced a number of supplements.

The Summer 2023 includes a record of community events during the first part of last year while the Autumn 2023 does likewise up to Christmas.

We are aiming to produce similar publications for 2024.

We have also set up a Business and Community Directory. Please contact us at dailygrunch@outlook.com for further information including rates for the Directory.

See below for The Daily Grunch Rate Card.

Graham White

RATE CARD ADVERTISING PRICES

FROM 8th APRIL 2024

Full Page: 30p per issue
1/2 Page: 18p per issue
1/4 Page: 12p per issue

Community Rates: 50% Discount

Invoicing every 100 issues. 300 issues per annum.

All Prices ex-VAT

For further information and to place advertising: dailygrunch@outlook.com

AS ALWAYS WE ENCOURAGE YOU TO SEND US YOUR NEWS AND DETAILS OF ANY EVENTS YOU MAY BE HOLDING.

Email us at

grassrootspublications@btconnect.com
ruralgrunch@btconnect.com

Deadline: Approx two working days before publication - for example Friday = 10am Wednesday

TAKE A SHORT CUT BY SUE

Many people are now reading The Daily Grunch but for some it is a new experience.

For a few, it may be too many clicks or you cannot remember the name of the website.

There is a little trick:

Go to the www.grassrootspublications.co.uk Home Page where the link to The Daily Grunch is located. In the top right hand corner of this page you will see 'three vertical dots'. Click on these and you will see a list of options.

Choose 'Add to Home Screen' and you should have an icon for Grassroots Publications in the favourites area or something similar on your device. Then any time you want to access The Daily Grunch you only have to click on this icon to take you to the link.

If you want to find a specific article in The Daily Grunch try this



Ctrl + F to find the subject/word you are looking for. This avoids trying to find the elusive article.

For example: Open The Daily Grunch – Press **Ctrl + F** which will open a small box, Type in the box the topic/number you are looking for. Say for example - 'Riseley'.

You will find 16 entries in the 27th October.2020 edition.

Sue
www.renholdvillage.co.uk

NEW YEAR'S RESOLUTION

Why not try a walk with North Beds Ramblers?

We are a friendly group who walk on Saturdays:
Every Saturday afternoon, approx. 6 miles

Saturday mornings, twice monthly, 10 -12 miles
Just turn up wearing suitable footwear and clothing
Sorry only assistance dogs allowed

We walk in all weathers,
you may get wet and muddy!!

Bring refreshments
(and plenty of water in the summer)

Interested?
Find our programme on the Ramblers website <https://www.ramblers.org.uk/north-bedfordshire>
Facebook <https://www.facebook.com/groups/northbedsramblers>
Twitter @nb_ramblers

Walks are free but if you decide to walk with us regularly we would like you to join the Ramblers

The Ramblers' Association is a registered charity (1091577) and a company limited by guarantee, (No.443892). Registered Office: 1 Clive Street, 3rd Floor, London, SE1 5DU

Collection Calendar

Please ensure that your bins are out for collection by 6am on your collection day. Missed collections must be reported within 48 hours of your scheduled collection. Visit www.bedford.gov.uk/recycling to report a missed collection.



Remember!

Garden waste collections are suspended from 1st December to 1st March.

December 2023 and January 2024 Date Changes

Recycling only

Mon 25 Dec	moves to	Sat 23 Dec
Tues 26 Dec	moves to	Wed 27 Dec
Wed 27 Dec	moves to	Thurs 28 Dec
Thurs 28 Dec	moves to	Fri 29 Dec
Fri 29 Dec	moves to	Sat 30 Dec

Rubbish only

Mon 1 Jan	moves to	Tues 2 Jan
Tues 2 Jan	moves to	Wed 3 Jan
Wed 3 Jan	moves to	Thurs 4 Jan
Thurs 4 Jan	moves to	Fri 5 Jan
Fri 5 Jan	moves to	Sat 6 Jan

Key

Red Outline = Date Change

Orange = Recycling Only

Purple = Recycling and Garden

Grey = General Rubbish

December 2023				
M	T	W	T	F
				1
4	5	6	7	8
11	12	13	14	15
18	19	20	21	22
25	26	27	28	29

January 2024				
M	T	W	T	F
1	2	3	4	5
8	9	10	11	12
15	16	17	18	19
22	23	24	25	26
29	30	31		

February 2024				
M	T	W	T	F
				1
5	6	7	8	9
12	13	14	15	16
19	20	21	22	23
26	27	28	29	

March 2024				
M	T	W	T	F
				1
4	5	6	7	8
11	12	13	14	15
18	19	20	21	22
25	26	27	28	29

April 2024				
M	T	W	T	F
1	2	3	4	5
8	9	10	11	12
15	16	17	18	19
22	23	24	25	26
29	30			

May 2024				
M	T	W	T	F
		1	2	3
6	7	8	9	10
13	14	15	16	17
20	21	22	23	24
27	28	29	30	31

June 2024				
M	T	W	T	F
3	4	5	6	7
10	11	12	13	14
17	18	19	20	21
24	25	26	27	28

July 2024				
M	T	W	T	F
1	2	3	4	5
8	9	10	11	12
15	16	17	18	19
22	23	24	25	26
29	30	31		

August 2024				
M	T	W	T	F
			1	2
5	6	7	8	9
12	13	14	15	16
19	20	21	22	23
26	27	28	29	30

September 2024				
M	T	W	T	F
2	3	4	5	6
9	10	11	12	13
16	17	18	19	20
23	24	25	26	27
30				

October 2024				
M	T	W	T	F
	1	2	3	4
7	8	9	10	11
14	15	16	17	18
21	22	23	24	25
28	29	30	31	

November 2024				
M	T	W	T	F
				1
4	5	6	7	8
11	12	13	14	15
18	19	20	21	22
25	26	27	28	29

GRUNCH OPINION

We are now approaching the period of statutory consultation for the East-West Rail project. But do we know about it?

I am specifically referring to the North Bedfordshire Wolds area with particular reference to Clapham, Ravensden and Wilden.

Pre-statutory events are being organised by the East West Rail Company but none in our area.

There is an event at Roxton Village Hall on Monday 20th May between 2pm and 7pm while the opening event on Tuesday 7th May has been relocated to The Swan Hotel in Bedford and is between 2pm and 7pm.

It is disappointing that there is not an event in our immediate area - surely Wilden deserves to host one.

As I have previously stated, the decision to use Route E and more importantly the alignment that goes via Clapham Park, Ravensden and Wilden has already been confirmed.

However, those living in the affected areas

should be still fighting against this particular route.

Instead the talk appears to be scrap the entire project. That is not going to happen especially if the Universal plans at Stewartby come to fruition.

The purpose of the forthcoming events is to provide information on how the railway will be built and how it will affect the countryside that it passes through.

Will there be tunnels, viaducts or embankments?

There has been little discussion about how it crosses the major routes near the Sainsbury Roundabout on the outskirts of Bedford.

Then the railway has to pass through the elevated Clapham Park. What are the plans for Ravensden and Wilden as it passes very close to these villages? The silence is worrying along with the lack of community events.

Graham White

DAVID JAMES
WWW.DAVIDJAMESKITCHENS.CO.UK



We are a local manufacturer of beautiful kitchens. We sell direct to save you money. The factory showroom has an extensive display of different styles.



**SAVINGS ON ALL KITCHENS
& Up To 25% Off Top Brand
Appliances**

**PULLOXHILL BEDS MK45 5EU
01525 722230**





Treespecific^{Ltd}

tree management

A comprehensive range of tree services from a local dedicated tree surgeon with twenty years experience within the tree industry.

- ✦ All aspects of Tree Maintenance and Tree Care
- ✦ Tree Felling
- ✦ Crown Reduction/Thinning
- ✦ Sectional Dismantling
- ✦ Hedges Reduced and Trimmed
- ✦ Dead Wood Removed
- ✦ Fruit Tree Pruning
- ✦ Tree Planting
- ✦ Fully insured and Skilled Arborist
- ✦ Member of the Royal Forestry Society

Contact us today for a free quote

Telephone: **01234 828895**

Mobile: **07949 368374**

Email: **simonowen@treespecific.co.uk**

www.treespecific.co.uk

FOCUS ON THE RISELEY SHOW



After more than a decade in the role, Judith Wright has stepped down as organiser of The Riseley Show.

Judith rebuilt the event from scratch and turned it into one of the best occasions in north Bedfordshire.

However, the future is in good hands as a trio of well-known faces in the village have taken on the responsibility of organising the events on the field at this year's show on 14th September - **Nicky Perfect, Karen Aves and Sharlene Taylor.**

Sharlene said: "This year, we are aiming to showcase everything that makes Riseley so special. From our fantastic local groups to the vibrant community spirit, we want to celebrate it all.

"We want to have all of the incredible Riseley groups to come together for a day of fun and festivities.

"We appreciate not all groups are able to have a stall.

"If that is the case we would like to showcase your group as part of our visual display. This will include all the different groups in Riseley.

For further information on how you can get involved email:

riseleyvillageshow@outlook.com



THE RISELEY SHOW
SATURDAY 14th SEPTEMBER
PUT THE DATE IN YOUR DIARY

FOCUS ON JULIA JARMAN BOOK SIGNING



Author Julia Jarman held a book signing session at the Fox and Hounds pub in Riseley on 3rd April for her latest novel 'Widows on the Wine Path'.

Best known for her children's books, Julia is now catering for the adult market.

Her first adult book was published last August.

"The first book for the older market went down very well and again I have enjoyed writing the second novel. It was great to see so many people at the second book launch."



R.J.F. Plumbing, Heating
& Mechanical Services Ltd

Roger Flanagan
Director

38 Hookhams Lane
Renhold

Bedford MK41 0JT

Office: 01234 771396

Mobile: 07717 756677

Email: info@rjf-plumbing.co.uk



PLEASE SUPPORT OUR ADVERTISERS

GRUNCH NEWS



The Oakley Arms at Harrold has gained Two AA Rosettes in culinary excellence.

On their Facebook Page, The Oakley Arms expressed their delight.

A spokesman for the popular High Street pub said: "We always say we just do what we love to do.

"So it is incredible to be given this recognition.

"Our whole team has made this happen and it is something that puts a real spring in our steps.

"A big thank you also goes out to our independent suppliers, farmers and producers who supply us with the best produce to use."



93A High Street, Rushden
NN10 0NZ

01933 350866

app.timbrownsbutchers.com

enquiries@tebrownbutchers.co.uk

Beef, Lamb, Pork, Chickens, Sausages, Bacon
and so much more



FOCUS ON THE VILLAGER BUS

The Villager Bus is run by volunteers for the North Bedfordshire communities. There are scheduled routes each week and it can be hired for outings.

The new bus can take up to 16 passengers including space for one wheelchair user. It has a low floor for easy access and a wheelchair ramp, as well as air conditioning, WiFi and phone charging points.

The Villager Bus provides regular bus services from the North Bedfordshire villages to various destinations, including Olney, Bedford, Milton Keynes, Rushden Lakes and St Ives. Concessionary Bus Passes can be used as well as payment by card or cash. Currently the cost of a single journey to any destination is only £2.

The purchase of the new bus was made possible with the generous support of various sponsors including Bedford Borough Council, the Harpur Trust, The Gale Family Charity Trust, Felmersham and Radwell Community Trust, Wixamtree Trust, The Connolly Foundation and the Christopher H R Reeves Trust.



● The brand new Villager Bus.

The Villager Bus is a service for all, helping everyone to get out to town centres and local supermarkets. It has been run entirely by volunteers since 1987 with the aim of improving the lives of those in the North Beds villages.

The service supports many older people and those with mobility problems who may find it difficult to travel on their own. It's a great opportunity to socialise too! We currently deliver between 250 and 300 passenger journeys a month as well as frequent community hires.

NEWTON BROMSWOLD COWSLIP AND FRITILLARY DAY



● Newton Bromswold celebrated its Cowslip and Fritillary Day with an afternoon tea at St Peter's Church where there was also a plant sale.

MONDAY 1st APRIL

Lane &

HOLMES

Est. 1985

Sales, Lettings & Auctions



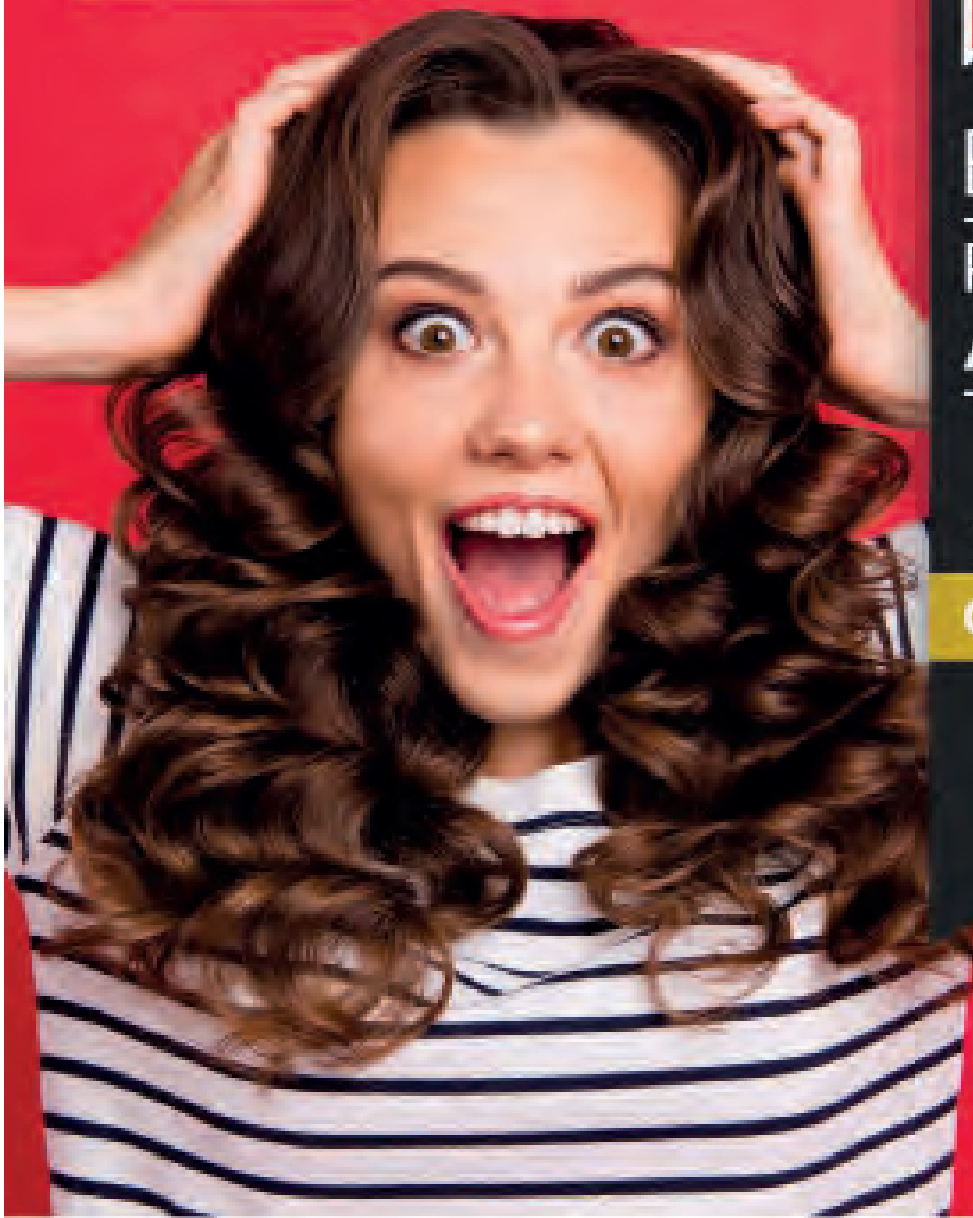
BRITISH
PROPERTY
AWARDS

2021



GOLD WINNER

ESTATE AGENT
IN BEDFORD



Have you seen... We **won!**
For a winning service, **talk to us.**

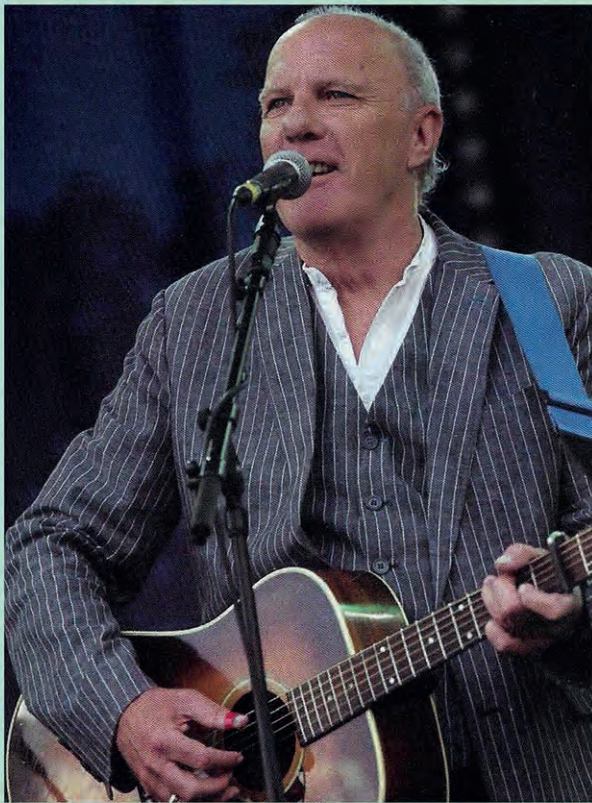
01234 327744 | sales@laneandholmes.co.uk | laneandholmes.co.uk

**St Neots Folk Club
present an Evening
with Richard Digance**

23/04/2024

8 - 10.30pm

**The Priory Centre
Priory Lane, St Neots. PE19 2BH**



If this BAFTA Nominated entertainer and a recipient of The Gold Award from The British Academy of Composers and Songwriters doesn't have songs to sing or stories to tell then it would be a shock to one and all.

<https://www.richarddigance.com/>

Contact St Neots Folk Club

stneotsfolkclub@aol.com

<http://www.stneotsfolkclub.co.uk/>

01234 376278

Tickets £20.00. Members £18.00

Parking nearby and bar on site.

DEAN DUCK DASH



Crowds flocked to the Bridge at Upper Dean to witness the annual Dean Duck Dash.

Organised by the Eileen Wade Primary School Parents Association, the big event went ahead as scheduled despite recent heavy rain.

Around 2000 yellow plastic ducks made their way down

the brook, which was deep in places.

This did not deter youngsters from entering the brook to greet the ducks.

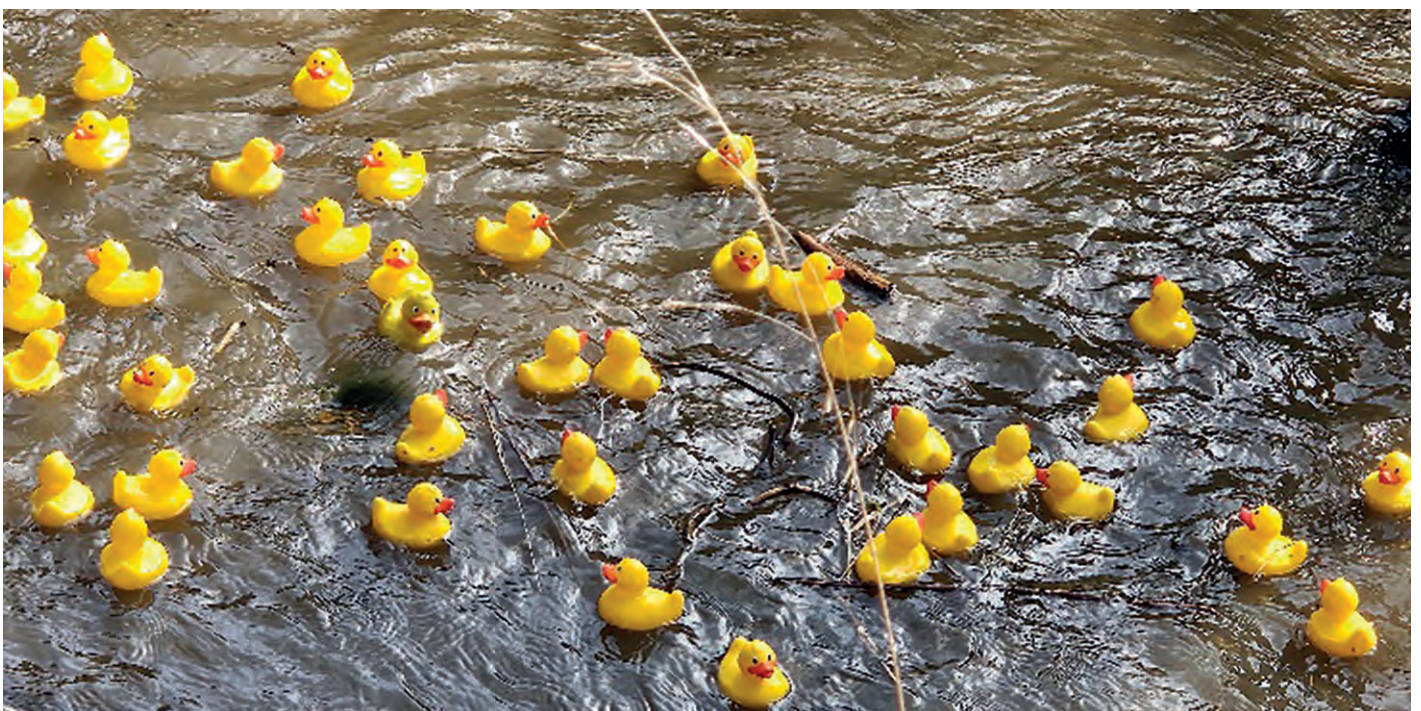
After the race, there was a fete and prize giving at the School in the High Street.

Plenty of Dean Duck Dash

souvenirs were available for sale throughout the day.

The Dash attracted plenty of national and local sponsorship including Northampton Saints Rugby Club and Riseley-based Sporting Targets.

[Coverage on Pages 28-29](#)



SATURDAY 23rd MARCH

DEAN DUCK DASH



Coverage on Pages 28-29

SATURDAY 23rd MARCH



Andrew Blair

Professional Carpet and Upholstery Cleaning

Phone or Whatsapp 07867499792

e-mail arblair64@yahoo.co.uk

website

<https://andrewblairprofessionalcarpetandupholsterycleaning.com>

PLEASE SUPPORT OUR ADVERTISERS



ABACAB DOG GROOMING

New dog grooming service in Ddell. We offer a personal service aimed to meet the needs of you and your dog, catering for all breeds large or small. Our services include:-

- Clipping/trimming
- Hand stripping (Terriers and Spaniels)
- Nail trims

TELEPHONE:- 01234 720825 OR 07860 837043

SI TAX & ACCOUNTING SERVICES

**QUALIFIED ACCOUNTANT
FCCA ATT**

**Professional and friendly service
Sole Traders, Limited Companies
Partnerships, Business Start-ups
Bookkeeping, Payroll, CIS
Subcontractors
VAT & Tax**

**sally@sjtax.co.uk
01234 831997
07899 808592**

PLEASE SUPPORT OUR ADVERTISERS

FOR YOUR DIARY

Saturday 27th April: North Beds Ramblers Walk - 1.30pm. Northampton Rd/The Glade, Bromham 6 miles. Salem Thrift, Woodcraft Wood, Stevington. Also day trip to London for Church Walk. For further details go to www.ramblers.org.uk/north-bedfordshire

Saturday 27th April: Keysoe Village Hall from 10am. Keysoe Plant Sale. Raising funds for the Village Show at Keysoe.

Saturday 27th April: Harrold Green and Country Park. From 12.30pm. Harrold Pit Run. Various running races for youngsters and seniors plus stalls on The Green.

Sunday 28th April: Stevington Village Hall at 10am. Stevington 12km Road Race. Starts and finishes at Stevington and goes through Oakley and Pavenham.

Sunday 28th April: Elisabeth Curtis Centre Riding for the Disabled, Chestnut Avenue, Bromham. 11am to 3pm. Spring Craft Fayre. £1 entry for adults including free tea or coffee. Accompanied Under-16d free.

Saturday 4th May: Coffee Shop, Stables Christian Centre, Bolnhurst. 2pm-4:30pm. Homemade cakes with tea, coffee in a rural setting. On sale: plants, preserves, and craft items. Facebook: [stableschristiancentre](https://www.facebook.com/stableschristiancentre)

Monday 6th May: Bolnhurst Old School, School Lane, Bolnhurst. 11am. May Bank Holiday Walk. Choice of walk. Hot food from 12 noon. Tickets £8 to include choice of walk and a selection of hot food.

Monday 6th May: Sharnbrook Bowls Club, Lodge Road, Sharnbrook. 11am to 5pm. Sharnbrook Bowls Club Open Day. Come and try bowls.

Saturday 11th May: Keysoe Village Hall from 10am. Keysoe Jumble Sale. Raising funds for the Village Show at Keysoe.

Saturday 18th May: Pertenhall from 9am. North Bedfordshire Young Farmers Rally. Judging of livestock, food, crafts etc. Stalls and entertainment for all the family throughout the day

Saturday 18th May: Park Road Baptist Church, Park Road, Rushden. From 3pm. Veterans Big Band. 19 Piece Big Band. Classic Big Band Music. Tickets £15 from www.wegotickets.com

Saturday 8th June: Ravensden Village Hall. 7pm Pub Night. Live music from Freddie's Barnet. Tickets £10 each to include first drink. More info from Chris on thebends@btinternet.com

Sunday 9th June: Newton Bromswold. 2pm-5pm. Newton Bromswold Open Gardens. Visit gardens of Newton Bromswold. Refreshments in Village Hall. Adult Ticket: £3. Family Ticket - 2 adults and 2 children: £5

Saturday 6th July: Newton Bromswold at 2pm. Newton Bromswold Village Fete. Rushden Mission Band and usual variety of stalls and games. Plus afternoon teas

Saturday 20th July: Barn in Newton Bromswold at 7pm. Barn Dance with band Kelly's Eye. Tickets - Adults £12.50 and Children £5. Available in June on 07703 476689. Proceeds to Friends of Newton Church.

Every Sunday: Great Barford Village Hall at 10am. Great Barford Run Together. Running for fun for all standards including novices.

Every Thursday: Riseley Village Hall 3.30-5pm. Riseley Bus Stop Cafe for School Years 7-13 During school term.

First Friday of the Month: Keysoe Village Hall at 7.30pm. Bar Night

Every Saturday: There may be cricket matches at Riseley, Sharnbrook and Thurleigh

FOR YOUR DIARY

£1 per insertion per 30 days for a max 30 word insertion, cheque payable to Grassroots Publications, may be sent to Grassroots Publications, 2, Strawberry Hill Cottages, Knotting Green, Bedford, MK44 1AB Use this section to advertise any community or social event that may be coming up in the forthcoming months. It can include sports events. We reserve the right to omit any dates if payment is not made. If in doubt feel free to contact us on 07725 812963 or email: dailygrunch@outlook.com. Price includes VAT

YELDEN CURRY TASTING



Mama Kee's Kitchen held a successful Curry Tasting Session at Yelden Village Hall.

A good turnout of curry enthusiasts had a variety of dishes to savour including lamb and chicken curries along with samosas and coconut oil flavoured rice.



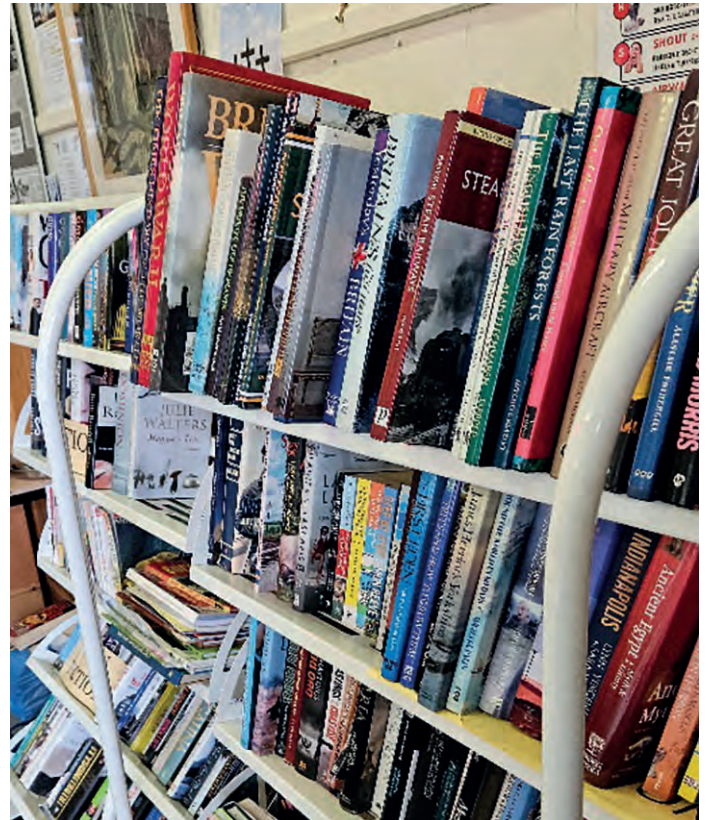
Also, on display were a variety of items by Bex Henna The Crap Cutting Yogi.

The next event will feature vegan and gluten-free items on Saturday 11th May from 3pm to 5pm.



SATURDAY 23rd MARCH

BOLNHURST SOUPER BOOK BROWSE



Another full house at the Bolnhurst Souper where there was a fine selection of soups prepared by Wendy Levy and her dedicated team. The highlight was the Moroccan tomato and chickpea soup while the pea and mint also went down well. And there was time to look at the books on display.

FRIDAY 22nd MARCH

FOCUS ON NORTH BEDS RAMBLERS

Have you ever wondered about the bright yellow topped way makers you might encounter on a walk in the Bedfordshire Countryside? How do they get their yellow paint, how do they get into position, what happens when you see one that is either rotten or broken?

Not all counties have yellow topped way markers – certainly none of our northern neighbours do, but if you are a regular walker, you may well be aware that they are so much easier to spot than just a plain post. As part of North Beds Ramblers, we are well used to scanning the horizon for our yellow friends to confirm that we are heading in the correct direction.

Bedford Borough has over 900km of footpaths, bridleways and byways so imagine how many posts are distributed along those kilometres.

Sadly, wooden posts do not last forever and they need to be replaced. This is down to the work of Bedford Borough's Rights of Way team, who work hand in hand with local landowners and volunteer groups, including the Ramblers, to try to keep our Rights of Way in good order and well-marked.

In the past, posts were supplied to the Council



● Dedicated workers making some new waymarker posts.



● The humble waymarker post.

pre-painted but a few years ago that stopped and in stepped the local Ramblers. A number of local Ramblers members volunteer for RIPPLE (Repairing & Improving Public Paths for Leisure and Exercise). As part of this activity, we are the first step in preparing posts for deployment.

A small group mark up the posts for painting and apply three coats of paint – two of which are the bright yellow you will be used to searching out. These posts are then taken out to the various localities where more Ramblers volunteers – along with other volunteer groups and landowners 'plant' them in the appropriate positions. Our group of trusty volunteers are in the process of painting the latest batch of 50 posts to bring our total to over 400.

So next time you see a lovely yellow topped post – spare a thought for those who spend their time painting and deploying the posts. If you see one that is broken you can report its location on the Borough website, ideally with a picture on 'Report a problem on a public right of way'. If you would like to get involved, or just walk, please contact North Beds Ramblers on northbedswalks@gmail.com. We don't just paint and deploy posts, but also carry out path clearance, stile repairs and install gates.

Sandra Kelsey

See Ramblers Advert on Page 4



SARTORI WELLNESS

Therapeutic Massage

Feeling tired, stressed, stiff aching muscles, do you work on your feet all day?

Come unwind and relax with a therapeutic massage.

Choose from a Thai Foot Massage, Indian Head Massage or Tension Relief Massage.

Fully qualified and insured. Ladies Only. Based Rushden, Northamptonshire

Contact Mary To Book

Tel: 07464 100195

Email: sartoriwellness@gmail.com

www.facebook.com/sartoriwellness



PLEASE SUPPORT OUR ADVERTISERS



K9 Kuts

professional dog grooming

**Fully Qualified and Insured Dog
Groomer. I work one on one with your
dog, with a range of services.**

**63 High Street, Wilden,
Bedfordshire, MK44 2QD**

07538276993/

k9kutsgroomers@outlook.com

Facebook- k9kutsgroomers

GRUNCH NEWS

□ The Sun Inn, Felmersham are in the Best Destination class in the Muddy Stiletto Regional Awards. The Place, Bedford are in the Culture and Theatre Category. Voting is now closed and winners to be announced on 2nd May.

□ The Bolnhurst Walk takes place on May Day Bank Holiday Monday 6th May at 11am from the Old School, School Lane. There is a choice of walk with hot food and puds on your return. Tickets £8 and further details from jacqui_stone@hotmail.co.uk

□ The Keysoe Plant Sale will take place on Saturday 27th April at Keysoe Village from 10am. There will be a wide range of plants on sale. Funds raised for the Village Show at Keysoe in September.

□ Mama Kee's Au Chocolat will be presenting a feast of chocolate at Yelden Village Hall on Saturday 11th May between 3pm and 5pm. Entitled 'Chocolate and Chai Affair' it will be a multiverse of clean chocolate. Entry £7 Under-16s: Free.



● Renhold runners Catherine and Ali McDougall raised over £7,000 for Sue Ryder, St John's Hospice, Moggerhanger after taking part in the London Marathon on 21st April. Ali completed the 26.2 miles in three hours 42 minutes and 29 seconds while Cath did 4:38.43. They said: "We would to say a big thank you to everyone who donated to our JustGiving page and supported us."



Telephone 01234 709163
or 07899 016129



Qualified Chimney Sweep



- Riseley based professional Chimney Sweep.
- Fully qualified member of The Guild of Master Sweepers.
- Police CRB checked and £2 million liability insurance.
- Service reports that are recognised by all insurance companies.
- Specialist equipment used for Woodburning Stoves & Lined Chimneys.
- Recommended by local Stove / Fireplace installers.
- CCTV inspections and reports.

Contact Tony, your local Chimney Sweep.

www.black-horse-chimney-sweep.co.uk

e-mail tnav59@btinternet.com

FOCUS ON THE ST NEOTS FOLK CLUB

Tuesday 2nd April

St Neots Folk Club

Live Music

8pm-10.30pm

The Priory Centre

St Neots

Tom McConville. BBC Radio 2 Folk Awards
Musician of the Year

Tuesday 9th April

St Neots Folk Club

Live Music

8pm-10.30pm

The Priory Centre

St Neots

Folk duo Christine Alden and Alex Patterson.
Multi-instrumentalists and songwriters from East
Anglia.

Tuesday 16th April

St Neots Folk Club

Live Music

8pm-10.30pm

The Priory Centre

St Neots

A showcase evening with Artists, Rhys Wilson,
guitar and vocals. Paul Scourfield, melodeon and
vocals.



Tuesday 23rd April

St Neots Folk Club

Live Music

● *BBC Radio Two Folk Awards winner Tom
McConville is performing at St Neots on 2nd April.*

The Priory Centre

St Neots

Richard Digence, BAFTA nominated,
accomplished entertainer and all round artist. A
cracking night out.

Tuesday 30th April

St Neots Folk Club

Live Music

8pm-10.30pm

The Priory Centre

St Neots.

Round the Room. Performers and audience
welcome.

**FOLK MUSIC EVERY
TUESDAY AT
THE PRIORY CENTRE**

Sunday 28th April

11am to 3pm



join us for our

SPRING CRAFT FAYRE

at the Elisabeth
Curtis Centre

£1 entry for
adults
(including a
free tea or
coffee)

accompanied
children
under 16 free



Charity Number: 1137217

www.elisabethcurtiscentre.co.uk

Elisabeth Curtis Centre Riding For The
Disabled, Chestnut Avenue, Bromham,
Bedford, MK43 8HP

PLEASE SUPPORT OUR ADVERTISERS

GRUNCH RECIPES

OUR FAVOURITES

Eggs Benedict

Gordon Ramsay - BBC Good Food App

3tbsp white wine vinegar
4 eggs
2 toasting muffins
4 parma ham or cooked bacon

For The Hollandaise Sauce

125g butter
2 egg yolks
½ tsp white wine vinegar or tarragon vinegar
squeeze of lemon juice
pinch of cayenne pepper

Method

Bring a deep saucepan of water to the boil (at least 2 litres) and add 3tbsp of white wine vinegar. Lower the heat to a gentle simmer. Break the eggs into four separate coffee cups or ramekins. Split the muffins and toast them for a few minutes either side and warm some plates.

To make the Hollandaise Sauce

Put the egg yolks, white wine or tarragon vinegar, a pinch of salt and a splash of ice cold water in a metal or glass bowl that will fit over a small pan.

Whisk for a few minutes then put the bowl over a pan of barely water and whisk continuously until pale and thick - about 3-5 minutes. Remove from the heat and slowly whisk in the melted butter bit by bit until it is all incorporated and you have a creamy hollandaise. Season with lemon juice and cayenne pepper.

For the Eggs Benedict, swirl the simmering vinegared water briskly and slide in an egg. It will curl around to a neat round shape. Cook for 2-3 minutes and repeat with the other eggs.

To serve spread sauce on muffins, place ham or bacon and egg, spoon over remaining sauce.

GP SERVICES

GROUNDWORK AND DIGGER HIRE



PETER HAYES
PROPRIETOR

- Mini Digger and Driver Hire
- Various Size machines
- Breaker/Auger Attachments
- Dumper Hire
- Foundations/Concreting/Drainage
- Site Clearance
- Tree and Root Removal
- Sewage Treatment Plants Installed
- Leach Fields Installed
- Road Construction/Drives
- Patios/Hard Landscaping
- Menage/Horse Arena Construction
- Muck Heap Removal
- Fencing

01234 782940
07932 002937

enquiries@gpservicesonline.com
www.gpservicesonline.com

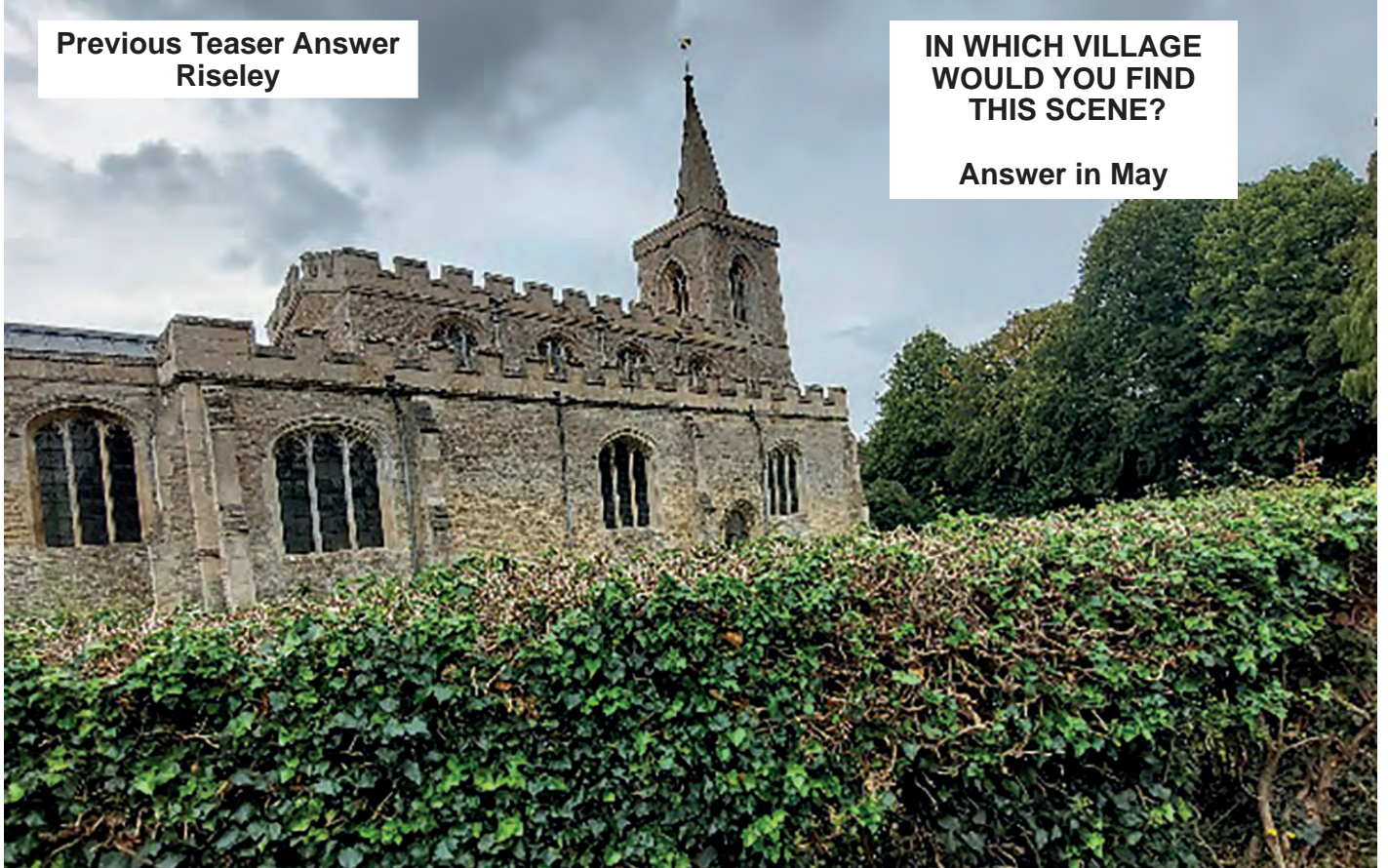
FULLY INSURED

GRUNCH TEASER

Previous Teaser Answer
Riseley

IN WHICH VILLAGE
WOULD YOU FIND
THIS SCENE?

Answer in May



BRIDGET'S COCKTAIL COLUMN



NEGRONI SBAGLIATO

This is Olly Smith's take on the classic Italian cocktail.

Ingredients and Method

Pour 25ml Campari and 25ml Sweet Vermouth into a glass, add ice and top up with Prosecco. Stir gently and garnish with a chunky slice of orange.



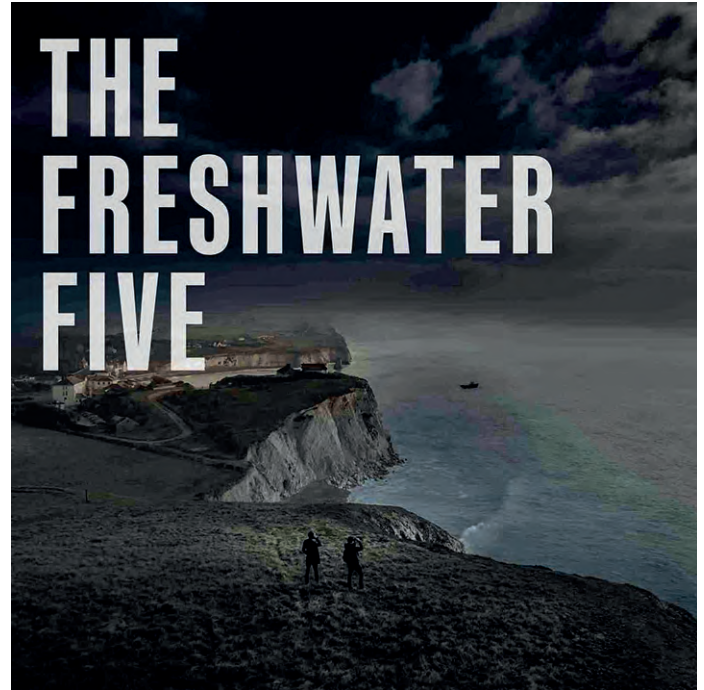
GRUNCH THEATRE

Freshwater 5
Produced by Deadman
The Place, Bedford
26th April
7.30pm

Tickets: £16 Concessions: £13

5 Fishermen. £53 million of cocaine. An ongoing fight for justice. A tale of our deteriorating coastal communities. An enthralling, poignant and poetic retelling of the infamous Isle of Wight tragedy.

In 2011, five fishermen on the Isle of Wight (Jamie Green, Jon Beere, Daniel Payne, Scott Birtwistle & Zoran Dresic) were sentenced to a total of 104 years for conspiracy to import £53m worth of cocaine. They have always professed their innocence. A tale that has long divided a community on the Isle of Wight.



FOR FURTHER DETAILS CONTACT THE PLACE BEDFORD
www.theplacebedford.org.uk or phone 01234 354321

GRUNCH THEATRE

Educating Rita
Raise The Roof Theatre
The Place, Bedford
8th-11th May
7.30pm

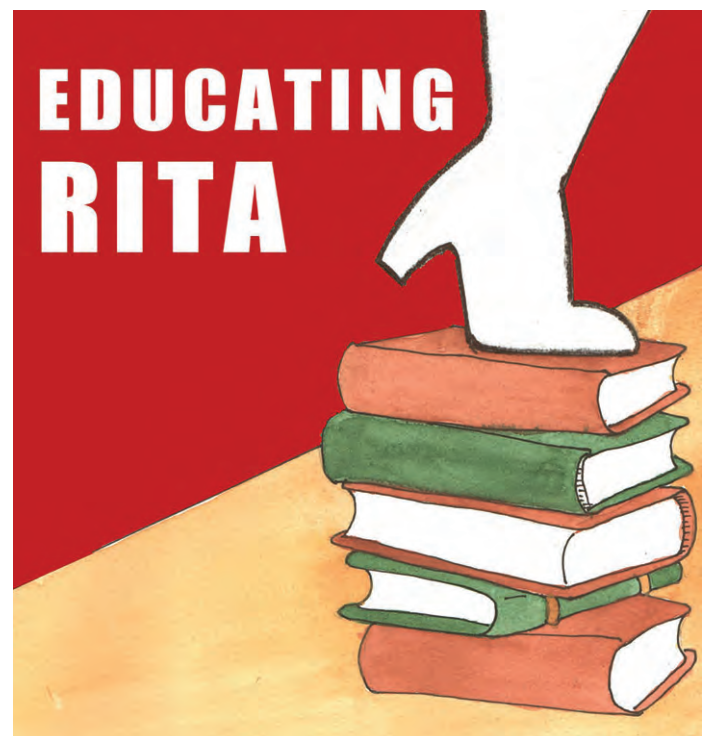
Tickets: £15 Concessions £12.50

Rita has enrolled on an Open University course to discover herself and better her circumstances.

Her tutor is Frank, a jaded academic and alcoholic, who is less than enthusiastic about taking on an open university student.

Yet he is fascinated by her take on life and realises she has potential.

An insightful look into the ways that social class and education can shape who we are and a careful study in the uncertainty of transformation as we go through life wishing for something we do not have.



FOR FURTHER DETAILS CONTACT THE PLACE BEDFORD
www.theplacebedford.org.uk or phone 01234 354321

GRUNCH THEATRE

Bad Girls The Musical
Sharnbrook Mill Theatre
14th-18th May
7.30pm

Tickets: £18 Group discounts available.

This powerful, uplifting and raucously entertaining British musical set in a British women's prison and based on the hugely popular award-winning TV drama will touch hearts and kick up a riot.

It is based on a book by Maureen Chadwick and Ann McManus. The music and lyrics is by Kath Gotts.

Rachel Hicks arrives at Larkhill Prison. She meets prison officers Sylvia Hollamby and Jim Fenner, wing governor Helen Stewart and the other women of Larkhall.

Fenner behaves in a friendly manner to Rachel, who is distraught over having her baby from her custody.



FOR FURTHER DETAILS CONTACT SHARNBROOK MILL THEATRE
www.sharnbrookmilltheatre.co.uk

GRUNCH THEATRE

Flo Smith - Now and Then
Giles Shenton Productions
The Place, Bedford
27th April
7.30pm
Tickets: £15 Concessions £12

From the producer of *Old Herbaceous*, *Three Men in a Boat*, *What's Wrong with Benny Hill?* and *The Essence of Audrey* comes a wonderful true story of a remarkably normal woman – Flo Smith.

It's 1969 and a woman looks back on her life in London. From the Boer War to The Summer of Love, Flo Smith, daughter, sister, wife, mother, widow and grandmother recalls with horror, humour, tears and joy those turbulent times at home and in the world beyond her front door.



FOR FURTHER DETAILS CONTACT THE PLACE BEDFORD
www.theplacebedford.org.uk or phone 01234 354321

GRUNCH THEATRE



Riseley's Sarah Chiari will be performing at the Bedford Fringe Festival on Tuesday 23rd July at 8.05pm in the Quarry Theatre Bar.

The Festival takes place from 18th July to 28th July with most of the tickets becoming available in March.

Sarah will be performing her own work featuring original songs written with passion, influenced by folk and jazz.

There will be atmospheric music with digital piano and voice.

This will be a 'Pay What You Can' event with suggested amounts ranging from £2 to £20.

Headline acts during BedFringe include Kiri Pritchard-McClean, who has appeared at The Apollo.

For further information see:
www.quarrytheatre.org.uk

GRUNCH THEATRE

The Secret Garden
Produced by Bedford Drama Company
The Place, Bedford
21st-24th May 7.30pm
25th May 2.30pm
Tickets: £14 Concessions: £10-£12

When a garden's kept proper, all weeded and neat, that chases the wild away.

But when it's left alone, for nature, who knows what secret things'd grow there....

In Jessica Swale's richly imagined adaptation of Hodgson Burnett's much loved classic, we follow the fortunes of Mary as her ice begins to melt and her curiosity leads her on one of the greatest adventures in popular literature.

Promises to be another fine production by Bedford Drama Group.



FOR FURTHER DETAILS CONTACT THE PLACE BEDFORD
www.theplacebedford.org.uk or phone 01234 354321

DAILY GRUNCH BIG MATCH

RENHOLD

3

BEDFORD ALBION

1



Renhold came from behind to defeat Bedford Albion 3-1 in the Bedfordshire County League First Division on 13th April.

SHARNBROOK FC MEMORIAL MATCH



The Legends clinched a narrow 3-2 win over the Old Boys in the Sharnbrook Memorial Match on 14th April. The match was staged in memory of stalwarts Mark Singleton and Nick Cook.

The match raised money for Parkinsons UK and Cancer Research UK.

SPECIAL SOUVENIR ISSUE ON THIS MATCH
www.grassrootspublications.co.uk
Click on Sharnbrook FC Memorial Match

SHARNBROOK FC MEMORIAL MATCH



SPECIAL SOUVENIR ISSUE ON THIS MATCH
www.grassrootspublications.co.uk
Click on Sharnbrook FC Memorial Match

WILDEN'S MAY DAY



Monday 6th May
11am-2pm

Maypole dancing at 1pm

WILDEN PRIMARY SCHOOL

FREE ENTRY

JOIN US FOR LOTS OF FUN!

Wilden School Children
dancing around the
Maypole!
also....

Mr Ice Cream Man
Stalls
Raffle
Tombola



For more information call 01234 771313

GRUNCH SPORT

CRICKET: Thurleigh are in the Northamptonshire League Division Five this season. Their fixtures are as follows: **April 27:** Bugbrooke (H); **4th May:** MK Air (A); **11th May:** Overstone Park III (A); **18th May:** Loddington & Mawsley II (H); **25th May:** Raunds (H); **1st June:** Willoughby (A); **8th June:** New Bradwell (H); **15th June:** Geddington II (A); **22nd June:** Long Buckby (H); **29th June:** Burton Latimer II (H); **6th July:** Kettering Town II (A); **13th July:** MK Air (H); **20th July:** Bugbrooke (A); **27th July:** Loddington & Mawsley II (A); **3rd August:** Overstone Park III (H); **10th August:** New Bradwell (A); **17th August:** Willoughby (H); **24th August:** Raunds (A); **31st August:** Long Buckby (A); **7th September:** Geddington (H); **14th September:** Kettering Town II (H); **21st September:** Burton Latimer II (A)

YOUTH CRICKET: Youth sessions at Thurleigh Cricket Club will begin on Thursday 25th April at their Keysoe Road ground.

The sessions for 9-15 years will take place

between 5.45pm and 7.15 pm and will run until 18th July. The cost is £60 for 12 weeks and includes a free training shirt.

Sessions for those aged between 5 and 8 years start on Thursday 15th May and run until 18th July between 5.45pm and 6.45pm. The cost is £40 for eight weeks and includes a free backpack, bat and T-shirt.

See Thurleigh Cricket Club Facebook Page for further details or contact Gary Richardson on 07813 311118.

FOOTBALL: AFC Oakley Development had an evening to forget as they crashed 7-0 to Wootton Blue Cross in the final of the **Bedfordshire County FA Intermediate Cup** on 23rd April.

AFC Oakley edged to a 5-3 win over Elstow Abbey in the **Bedfordshire County League Premier Division** on 23rd April. AFC Oakley travel to Biggleswade United Reserves on 27th April while Riseley Sports visit AFC Kempston Town Hammers.

www.ousevalleyphysio.co.uk

Claudia von Caron PHYSIOTHERAPIST

- Back pain & sciatica
- Neck & shoulder pain
- Whiplash & headaches
- Sports injuries
- Work related disorders
- Repetitive strain
- Injuries to joints & soft tissues
- MS & stroke

Mrs Claudia von Caron MCSP, Chartered Physiotherapist

Ouse Valley Physiotherapy Practice
3 The Drive, Sharnbrook, Bedford MK44 1HU
claudia@ousevalleyphysio.co.uk

Call 01234 781777



BODY



HARMONY



RUSHDEN & DISTRICT VETERANS GROUP
PRESENT

D-DAY 80
Commemorating the heroes of
the Battle of Normandy

THE VETERANS BIG BAND

19-PIECE
BIG BAND
CLASSIC BIG BAND MUSIC

PLAYED BY EX-MUSICIANS FROM
THE ROYAL MARINES, THE ARMY &
THE ROYAL AIR FORCE BANDS
- PERFORMING TOGETHER ON STAGE!



SATURDAY 18th MAY 2024

START: 3PM TICKETS: £15

FROM: P W HOUSE & OSBORNE TOYS OF RUSHDEN
SIDEY DESIGN ARCHITECTURE OF HIGHAM FERRERS
JESTERS - BROOK STREET, RAUNDS
OLD SCHOOL SHOP & PO - HIGH STREET, STANWICK
BELLAMY EYE CARE - IRTHLINGBOROUGH

PRBC

**PARK ROAD BAPTIST CHURCH
RUSHDEN NN10 0LH**

TICKETS ONLINE FROM
www.WeGotTickets.com



STEVINGTON 12KM ROAD RACE

Sunday 28th April

All athletes taking part in the Stevington 12km on Sunday 28th April must enter before the day of the race. No entries will be accepted on the day.

The race starts at 10am from Stevington Playing Fields close to the Village Hall.

The route passes through Oakley and Pavenham before returning to Stevington.

Runners will be able to collect their race numbers from the Village Hall from 8.30am.

Entry fees are £21 for runners affiliated to UK Athletics or are Run Together members. The fee for non-affiliated members is £23.

Pictures taken on this page are from last year's race and show runners coming out of Oakley.



HARROLD PIT RUN

Saturday 27th April

Athletes taking part in the Harrold Pit Run are encouraged to enter on on line, Those wishing to enter in person can do so at Harrold Centre on the evening of Friday 26th April and during the morning of the race .

Children's races start from 1pm and include events for school years 1-2 at 1pm, years 3-4 at 1.20pm and years 5-6 at 1.30pm.

The main race for seniors is at 3pm. It is approximately 5km and from The Green, the route goes around Harrold Country Park including adjacent meadows before returning to the centre of the village.

The entry fee is £15 adults and £6 children.

The event is also a day out for the family and there will be a variety of stalls on The Green.

A particular highlight away from the races will be the Bake-Off competition.

The day concludes with the raffle draw plus the awarding of the Bake-Off and race prizes.

Pictures on this page are from last year's events and were taken in Harrold Country Park.



At The Riseley Hub "SHARE A SONG"

The Early Risers Choir



Saturday
11th May 2024
At 11.00 am

- Listen to a mix of popular songs
- Enjoy an opportunity to sing along

Early Risers began in 2006 as a community initiative to build stronger links between schools and their local communities through singing. We are now part of Bedford Music Co-Operative and perform for local events under the directorship of Mr. Chris Topley. New members are always welcome-there are no auditions and no musical knowledge required; we all just love singing together.

PLEASE SUPPORT OUR ADVERTISERS



Soulbrook
Property Services

Extensions



Renovations



Carpentry & Joinery



Bathrooms



Kitchens

01234 782558

07731 818990

www.soulbrook.co.uk